

LOC I-PXE	APP CRS	Rwy ldg	4999
109.15	002°	TDZE	417
		Apt Elev	418

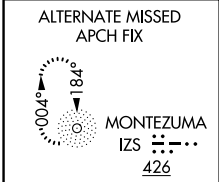
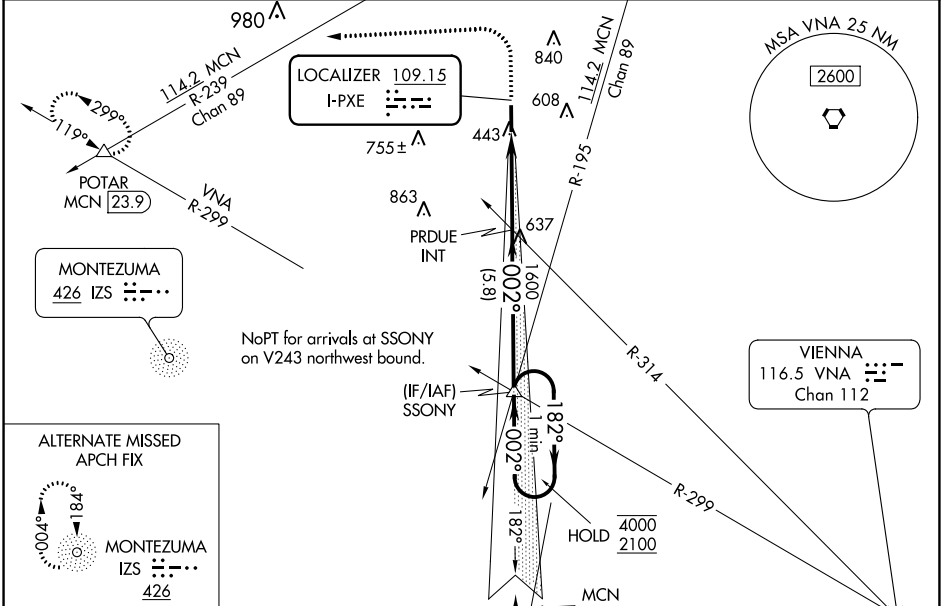
ILS or LOC RWY 36

PERRY-HOUSTON COUNTY (PXE)

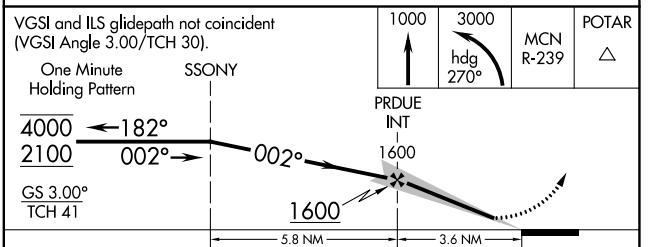
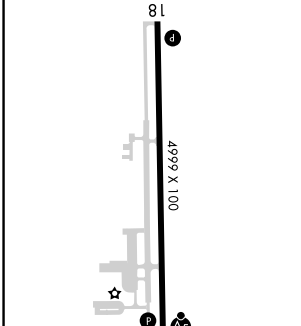
NA Autopilot coupled approach NA below 900. Rwy 36 helicopter visibility reduction below 3/4 SM NA. When local altimeter setting not received use Macon altimeter setting and increase DA to 789 and all MDA 40 feet. For inop ALS, increase S-LOC 36 Cats A/B visibility to 1 SM and Cats C/D to 1 3/4 SM. For inop ALS when using Macon altimeter setting, increase S-LOC 36 Cats A/B visibility to 1 SM.

MALSR MISSED APPROACH: Climb to 1000 then climbing left turn to 3000 heading 270° and MCN VORTAC R-239 to POTAR INT/MCN 23.9 DME and hold.

AWOS-3 123.825	ATLANTA APP CON ★ 124.2 279.6	UNICOM 122.725(CTAF) 0
--------------------------	---	----------------------------------



ELEV 418	TDZE 417
-----------------	-----------------



CATEGORY	A	B	C	D
S-ILS 36	751-3/4 334 (400-3/4)			
S-LOC 36	900-3/4	483 (500-3/4)	900-1	483 (500-1)
CIRCLING	900-1	482 (500-1)	960-1 1/2 542 (600-1 1/2)	980-2 562 (600-2)

PERRY, GEORGIA
Orig-A 06DEC18

32°31'N-83°46'W

PERRY-HOUSTON COUNTY (PXE) ILS or LOC RWY 36

SE-4, 25 MAR 2021 to 22 APR 2021

SE-4, 25 MAR 2021 to 22 APR 2021