


LOC/DME I-OAJ <b>108.7</b> Chan <b>24</b>	APP CRS <b>052°</b>	Rwy Idg TDZE Apt Elev	<b>7100</b> <b>89</b> <b>93</b>
---	------------------------	-----------------------------	---------------------------------------

# ILS or LOC RWY 5

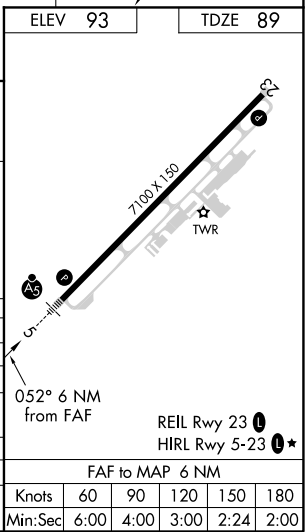
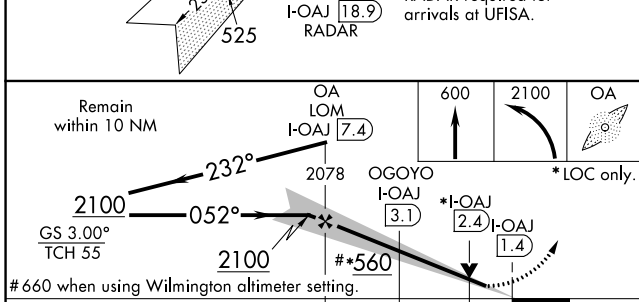
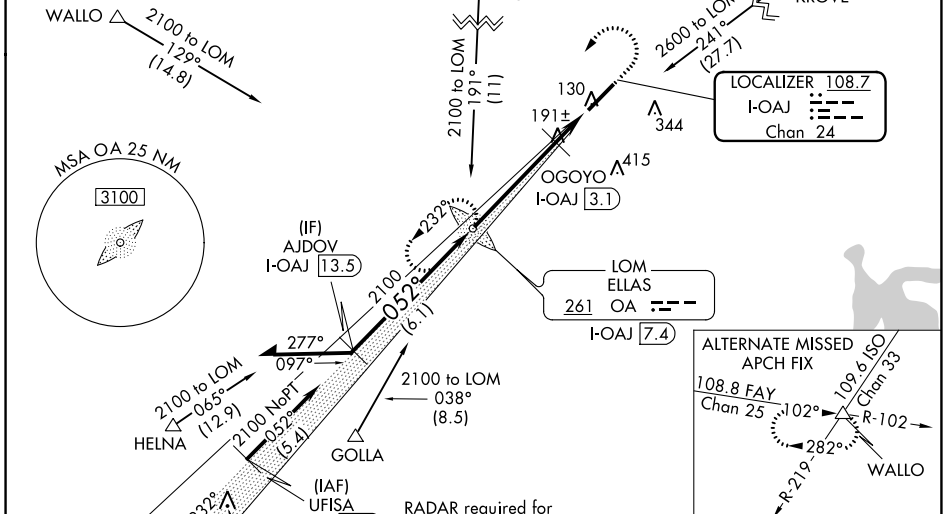
ALBERT J ELLIS (OAJ)

VDP NA with Wilmington altimeter setting. When local altimeter setting not received, use Wilmington altimeter setting and increase all DA 93 feet and all MDA 100 feet, increase S-LOC 5 Cats C/D visibility ¼ mile, increase Circling Cat C visibility ½ mile; increase OGOYO fix minimums, S-LOC 5 Cats C/D visibility ¾ mile. For inoperative MALS R when using Wilmington altimeter setting, increase S-LOC 5 Cats C/D visibility to 1 ¾ mile, increase OGOYO fix minimums S-LOC 5 Cats C/D visibility to 1 mile. For inoperative MALS R when using Wilmington altimeter setting, increase S-ILS 5 all Cats visibility to ¾ mile, increase S-LOC 5 Cats C/D visibility to 1 ¾ mile, increase OGOYO fix minimums S-LOC 5 Cats C/D visibility to 1 ¾ mile. ADF required.

MALS R  
  
 MISSED APPROACH:  
 Climb to 600 then climbing left turn to 2100 direct ELLAS LOM/I-OAJ 7.4 DME and hold.

ATIS <b>124.475</b>	WILMINGTON APP CON * <b>135.75 317.425</b>	ELLIS TOWER * <b>132.65</b> (CTAF) 	GND CON <b>125.4</b>	CLNC DEL <b>121.4 257.6</b> (when twr closed)	UNICOM <b>122.95</b>
------------------------	---	---	-------------------------	---	-------------------------

## ADF or DME REQUIRED



CATEGORY	A	B	C	D
S-ILS 5	289-½ 200 (200-½)			
S-LOC 5	560-½	471 (500-½)	560-1	471 (500-1)
CIRCLING	560-1	467 (500-1)	560-1½ 467 (500-1½)	660-2 567 (600-2)
OGOYO FIX MINIMUMS (DME REQUIRED)				
S-LOC 5	460-½	371 (400-½)	460-¾	371 (400-¾)
CIRCLING	500-1 407 (500-1)	560-1 467 (500-1)	560-1½ 467 (500-1½)	660-2 567 (600-2)

SE-2, 25 MAR 2021 to 22 APR 2021

SE-2, 25 MAR 2021 to 22 APR 2021