

WAAS CH <b>99433</b> <b>W23A</b>	APP CRS <b>233°</b>	Rwy ldg TDZE <b>1026</b> Apt Elev <b>1032</b>	<b>4710</b>
--	------------------------	---	-------------

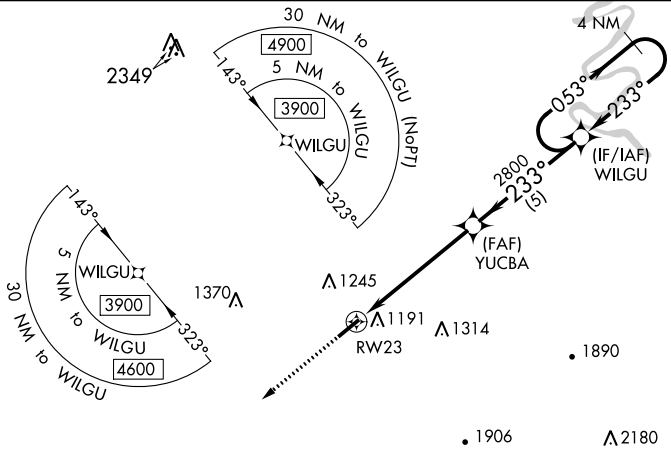
# RNAV (GPS) RWY 23

WARREN COUNTY MEML (RNC)

**NA** Baro-VNAV and VDP NA when using Upper Cumberland Rgnl altimeter setting. For uncompensated Baro-VNAV systems, LNAV/VNAV NA below -17°C (2°F) or above 54°C (130°F). DME/DME RNP -0.3 NA. Night Landing: Rwy 5 NA. Helicopter visibility reduction below 3/4 SM NA. When local altimeter setting not received, use Cumberland Rgnl altimeter setting and increase all DA 62 feet, and all MDA 80 feet; increase LNAV/VNAV all Cats, LNAV Cats C and D, and Circling Cat C visibility 1/8 mile, and increase Circling Cat D visibility 1/2 mile.

**MISSED APPROACH:**  
Climb to 3900 direct ZOVRI and hold.

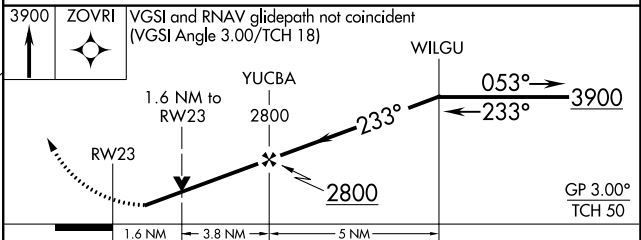
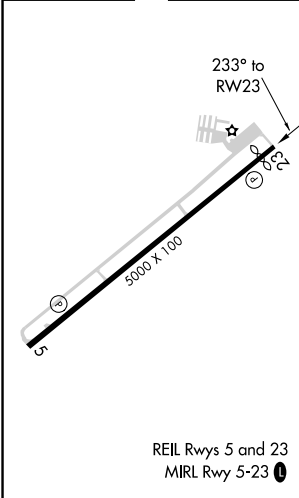
AWOS-3 <b>135.525</b>	MEMPHIS CENTER <b>128.15 323.125</b>	UNICOM <b>122.8 (CTAF) 0</b>
--------------------------	---	---------------------------------



SE-1, 25 MAR 2021 to 22 APR 2021

SE-1, 25 MAR 2021 to 22 APR 2021

ELEV 1032	TDZE 1026
-----------	-----------



CATEGORY	A	B	C	D
LPV DA	1276-1		250 (300-1)	
LNAV/VNAV DA	1423-1 1/8		397 (400-1 1/8)	
LNAV MDA	1580-1 554 (600-1)		1580-1 1/8 554 (600-1 1/8)	
<b>CIRCLING</b>	1580-1 548 (600-1)	1600-1 568 (600-1)	1600-1 1/8 568 (600-1 1/8)	1700-2 668 (700-2)