

APP CRS 002°	Rwy Idg 4002
	TDZE 620
	Apt Elev 620

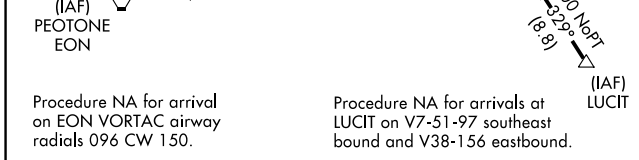
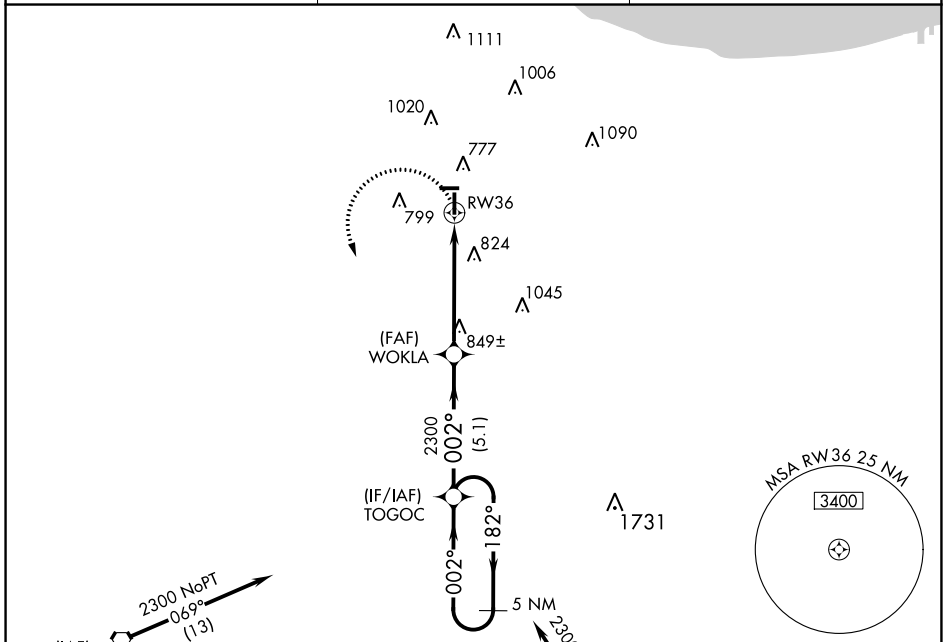
RNAV (GPS) RWY 36

LANSING MUNI (IGQ)

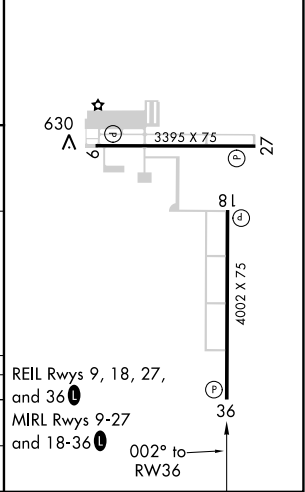
⚠ DME/DME RNP-0.3 NA. VDP NA when using Chicago Midway Intl altimeter setting. Circling Rwy 9 NA at night. When local altimeter setting not received, use Chicago Midway Intl altimeter setting and increase all MDAs 60 feet.

MISSED APPROACH:
Climbing left turn to 2300 direct TOGO and hold.

AWOS-3 119.275	CHICAGO APP CON 128.2 285.6	UNICOM 122.7 (CTAF) 0
---------------------------------	--	--



ELEV 620	TDZE 620
----------	----------



CATEGORY	A	B	C	D
LNVA MDA	1100-1	480 (500-1)	NA	NA
CIRCLING	1140-1	520 (600-1)	NA	NA

REIL Rwy 9, 18, 27, and 36
MIRL Rwy 9-27 and 18-36
002° to RWY 36

EC-3, 25 MAR 2021 to 22 APR 2021

EC-3, 25 MAR 2021 to 22 APR 2021