

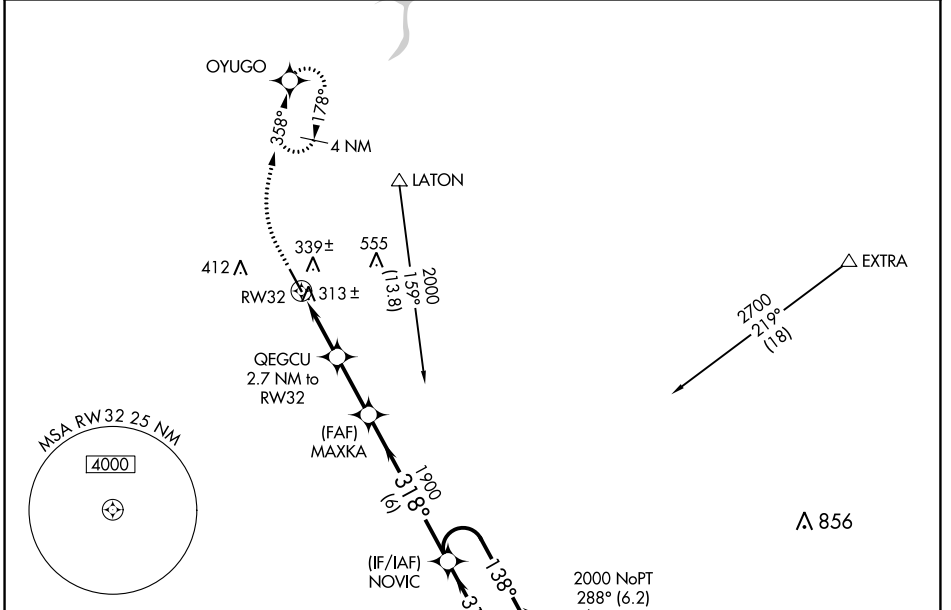
WAAS CH <b>70344</b> <b>W32A</b>	APP CRS <b>318°</b>	Rwy Idg TDZE Apt Elev	<b>5179</b> <b>238</b> <b>240</b>
--	------------------------	-----------------------------	---

# RNAV (GPS) RWY 32

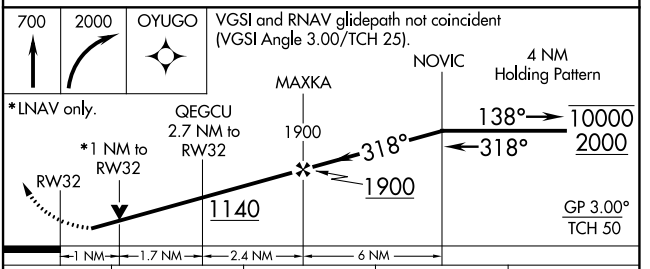
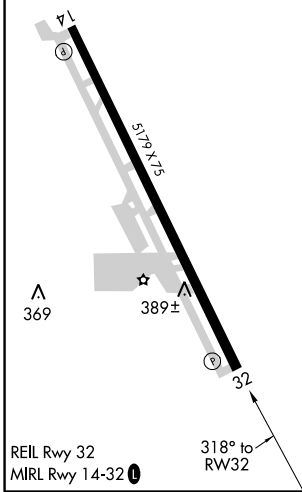
HANFORD MUNI (HJO)

RNP APCH.	MISSED APPROACH: Climb to 700 then climbing right turn to 2000 direct OYUGO and hold, continue climb-in-hold to 2000.
▼ Rwy 32 helicopter visibility reduction below 3/4 SM NA. For uncompensated Baro-VNAV systems, LNAV/VNAV NA below -3°C or above 54°C.	

ASOS <b>134.75</b>	FRESNO APP CON <b>123.9</b>	CLNC DEL <b>123.9</b>	UNICOM <b>122.8 (CTAF)</b>
-----------------------	--------------------------------	--------------------------	-------------------------------



ELEV <b>240</b>	TDZE <b>238</b>
-----------------	-----------------



	*LNAV only.			
	RW32	QEGCU 2.7 NM to RW32	MAXKA	NOVIC
	1 NM	1.7 NM	2.4 NM	6 NM
CATEGORY	A	B	C	D
LPV DA	488-3/4	250 (300-3/4)		NA
LNAV/VNAV DA	488-3/4	250 (300-3/4)		NA
LNAV MDA	580-1	342 (400-1)	580-1 1/2 342 (400-1 1/2)	NA

SW-2, 25 MAR 2021 to 22 APR 2021

SW-2, 25 MAR 2021 to 22 APR 2021