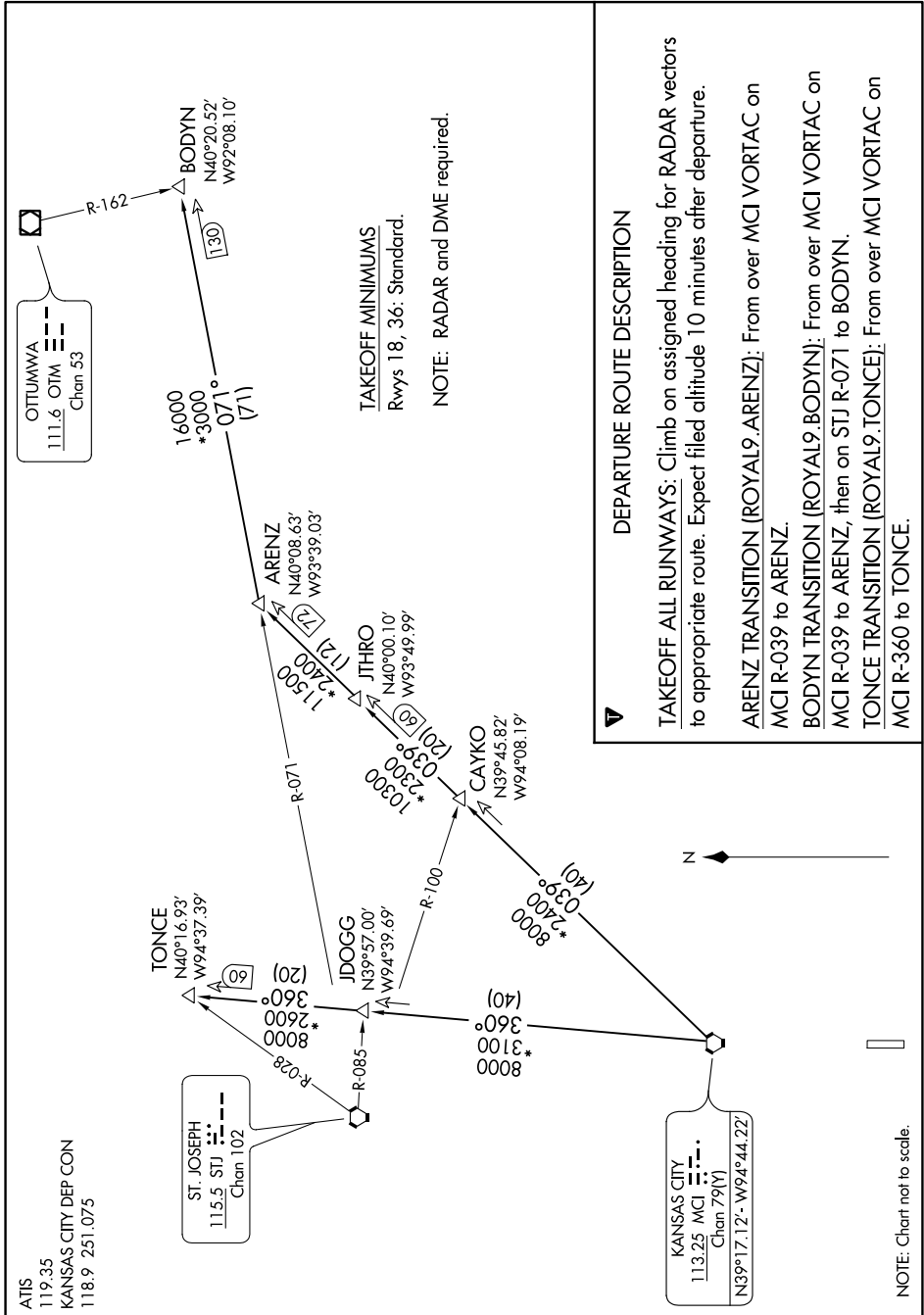


ROYAL NINE DEPARTURE

NC-2, 25 MAR 2021 to 22 APR 2021



DEPARTURE ROUTE DESCRIPTION

TAKEOFF ALL RUNWAYS: Climb on assigned heading for RADAR vectors to appropriate route. Expect filed altitude 10 minutes after departure.

ARENZ TRANSITION (ROYAL9.ARENZ): From over MCI VORTAC on MCI R-039 to ARENZ.

BODYN TRANSITION (ROYAL9.BODYN): From over MCI VORTAC on MCI R-039 to ARENZ, then on STJ R-071 to BODYN.

TONCE TRANSITION (ROYAL9.TONCE): From over MCI VORTAC on MCI R-360 to TONCE.

TAKEOFF MINIMUMS
Rwys 18, 36: Standard.

NOTE: RADAR and DME required.

NOTE: Chart not to scale.

ROYAL NINE DEPARTURE

NC-2, 25 MAR 2021 to 22 APR 2021