

WAAS CH 82700 W36A	APP CRS 356°	Rwy Idg TDZE 1086 Apt Elev 1096	4098
--	------------------------	---	-------------

RNAV (GPS) RWY 36

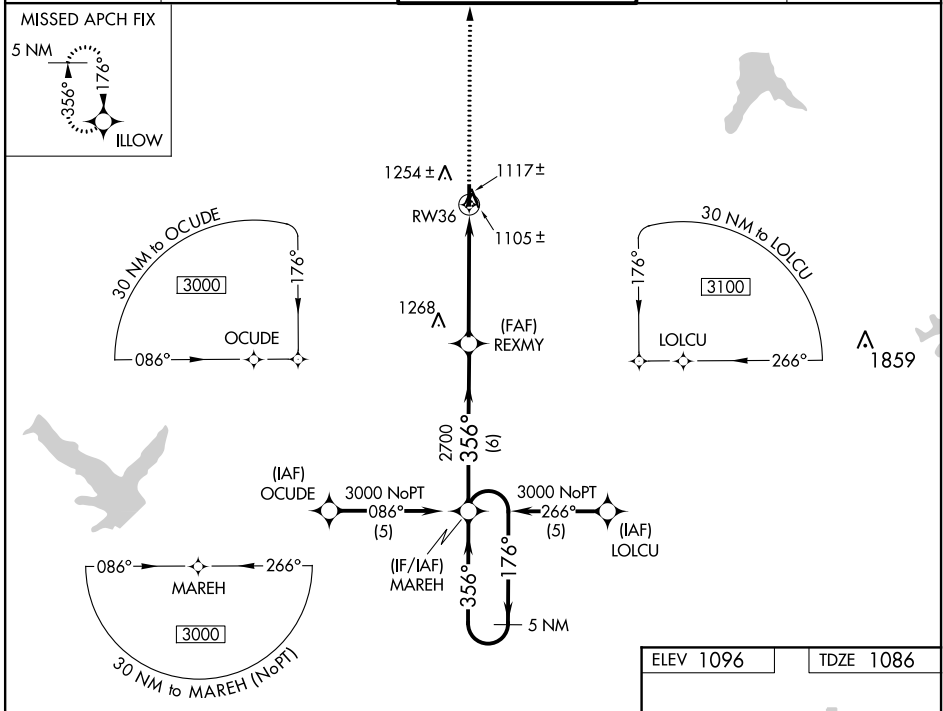
JOHNSON COUNTY EXECUTIVE (OJC)

▽ For uncompensated Baro-VNAV systems, LNAV/VNAV NA below -17°C (2°F) or above 95°C (203°F). DME/DME RNP-0.3 NA. Visibility reduction by helicopters NA. For inop MALSRS, increase LPV, LNAV/VNAV and LNAV all Cats visibility to 1 mile.



MISSED APPROACH:
Climb to 3100 direct ILLOW and hold.

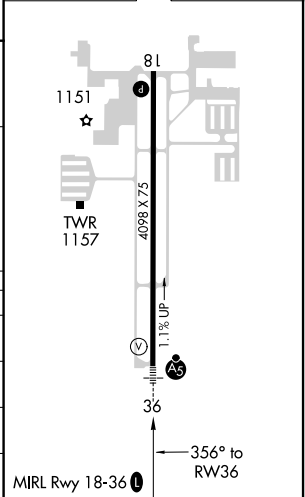
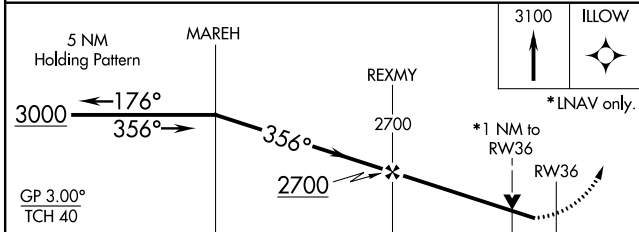
ATIS 119.35	KANSAS CITY APP CON 118.9 251.075	EXECUTIVE TOWER* 126.0 (CTAF) 225.4	GND CON 121.6	UNICOM 122.95
-----------------------	---	---	-------------------------	-------------------------



NC-2, 25 MAR 2021 to 22 APR 2021

NC-2, 25 MAR 2021 to 22 APR 2021

ELEV 1096	TDZE 1086
-----------	-----------



CATEGORY	A	B	C	D
LPV DA	1336-¾	250 (300-¾)		NA
LNAV/VNAV DA	1355-¾	269 (300-¾)		NA
LNAV MDA	1400-¾	314 (400-¾)		NA
C CIRCLING	1620-1	524 (600-1)	1620-1½ 524 (600-1½)	NA