

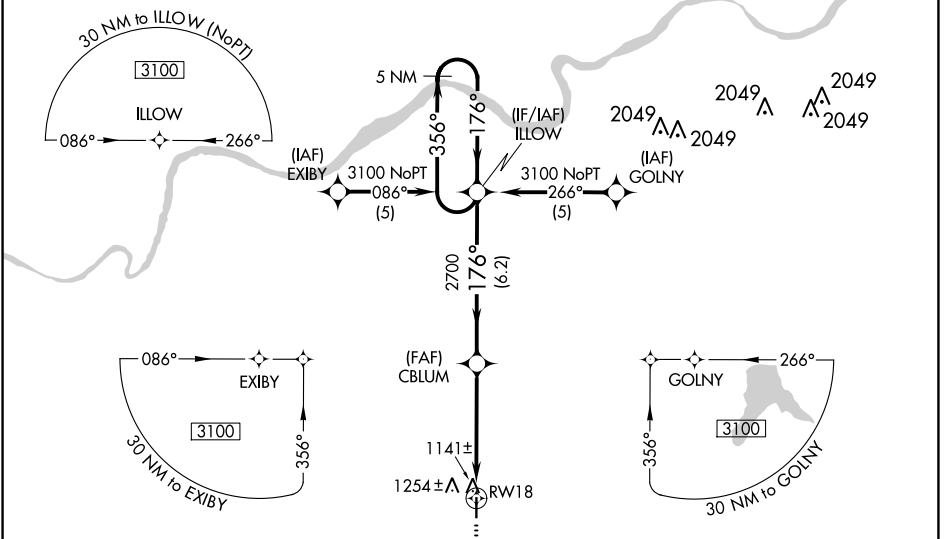
WAAS CH 53700 W18A	APP CRS 176°	Rwy Idg TDZE Apt Elev	4098 1096 1096
--	------------------------	-----------------------------	---

RNAV (GPS) RWY 18

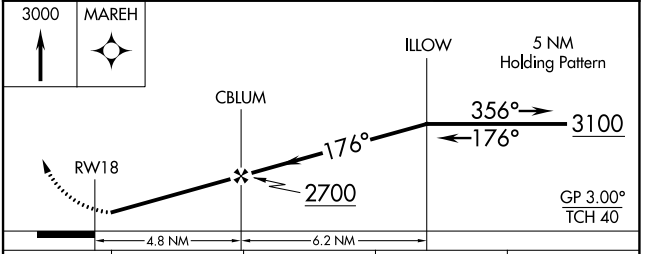
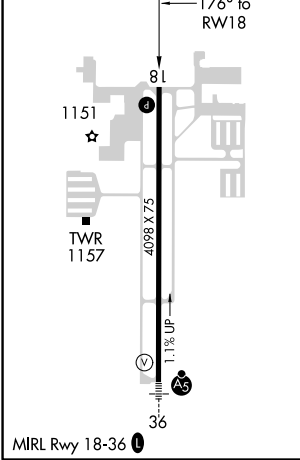
JOHNSON COUNTY EXECUTIVE (OJC)

RNP APCH.		MISSED APPROACH: Climb to 3000 direct MAREH and hold.		
▼ For uncompensated Baro-VNAV systems, LNAV/VNAV NA below -17°C or above 54°C.				

ATIS 119.35	KANSAS CITY APP CON 118.9 251.075	EXECUTIVE TOWER* 126.0 (CTAF) 225.4	GND CON 121.6	UNICOM 122.95
-----------------------	---	---	-------------------------	-------------------------



ELEV 1096	TDZE 1096
-----------	-----------



CATEGORY	A	B	C	D
LPV DA	1346-1 250 (300-1)			NA
LNAV/VNAV DA	1527-1½ 431 (500-1½)			NA
LNAV MDA	1560-1 464 (500-1)		1560-1¼ 464 (500-1¼)	NA
C CIRCLING	1620-1 524 (600-1)		1620-1½ 524 (600-1½)	NA

NC-2, 25 MAR 2021 to 22 APR 2021

NC-2, 25 MAR 2021 to 22 APR 2021