

LAKES THREE DEPARTURE

AL-5687 (FAA)

JOHNSON COUNTY EXECUTIVE (OJC)
OLATHE, KANSAS

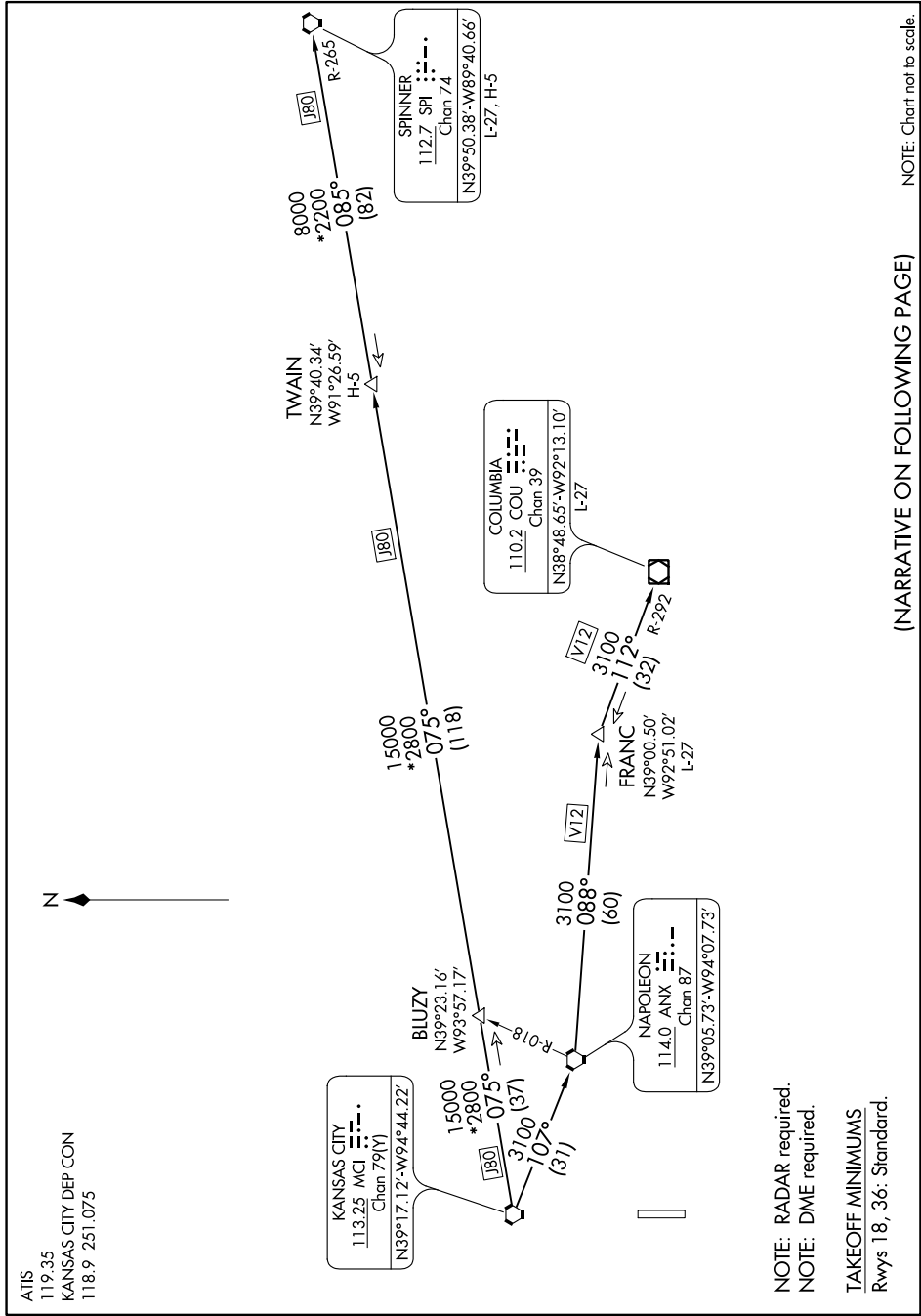
NC-2, 25 MAR 2021 to 22 APR 2021

ATIS
119.35
KANSAS CITY DEP CON
118.9 251.075

LAKES THREE DEPARTURE

(LAKES3.MCI) 28FEB19

OLATHE, KANSAS
JOHNSON COUNTY EXECUTIVE (OJC)



NOTE: RADAR required.
NOTE: DME required.

TAKEOFF MINIMUMS
Rwys 18, 36: Standard.

(NARRATIVE ON FOLLOWING PAGE)

NOTE: Chart not to scale.

NC-2, 25 MAR 2021 to 22 APR 2021