

WAAS CH <b>56615</b> <b>W15A</b>	APP CRS <b>155°</b>	Rwy Ldg TDZE Apt Elev	<b>5900</b> <b>1403</b> <b>1403</b>
--	------------------------	-----------------------------	---

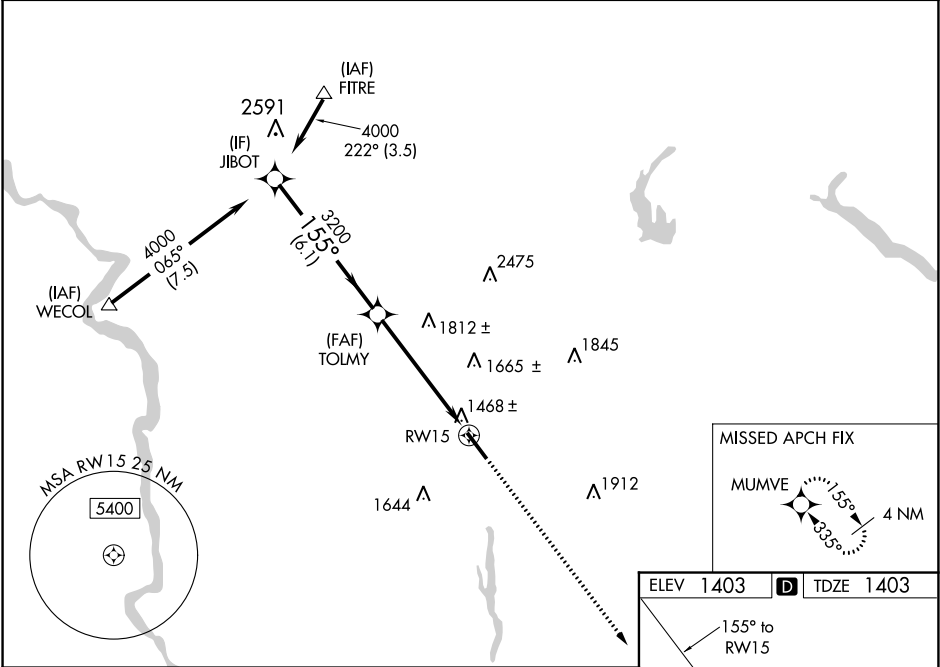
# RNAV (GPS) RWY 15

SULLIVAN COUNTY INTL (MSV)

**⚠** Baro-VNAV NA when using Newburgh altimeter setting. For uncompensated Baro-VNAV systems, LNAV/VNAV NA below -17°C (2°F) or above 46°C (114°F). DME/DME RNP-0.3 NA. Helicopter visibility reduction below 3/4 SM NA. When local altimeter setting not received, use Newburgh altimeter setting and increase LPV DA to 1858 and visibility all Cats 1/2 SM, LNAV/VNAV DA to 2077 and visibility Cat A/B/C 1/4 SM; increase all MDA 220 feet and LNAV Cat B visibility 1/4 SM, Cat C/D visibility 3/4 SM, and Circling visibility Cat C 3/4 SM, Cat D 1/2 SM.

**MISSED APPROACH:**  
Climb to 3300 direct MUMVE and hold.

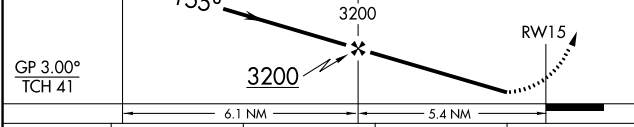
AWOS-3PT <b>124.725</b>	NEW YORK APP CON <b>132.75 363.1</b>	CLNC DEL <b>121.6</b>	UNICOM <b>122.8 (CTAF) 0</b>
----------------------------	---	--------------------------	---------------------------------



NE-2, 25 MAR 2021 to 22 APR 2021

NE-2, 25 MAR 2021 to 22 APR 2021

Procedure	Turn NA	JIBOT	4000	155°	TOLMY	3200	3300	MUMVE
-----------	---------	-------	------	------	-------	------	------	-------



CATEGORY	A	B	C	D
LPV DA	1653-1		250 (300-1)	
LNAV/VNAV DA	1872-1 3/4		469 (500-1 3/4)	
LNAV MDA	1980-1	577 (600-1)	1980-1 1/2 577 (600-1 1/2)	1980-1 3/4 577 (600-1 3/4)
CIRCLING	1980-1	577 (600-1)	2020-1 3/4 617 (700-1 3/4)	2180-2 1/2 777 (800-2 1/2)

