

LOC I-MSV 109.1	APP CRS 155°	Rwy Ldg TDZE Apt Elev	5900 1403 1403
---------------------------	------------------------	-----------------------------	---

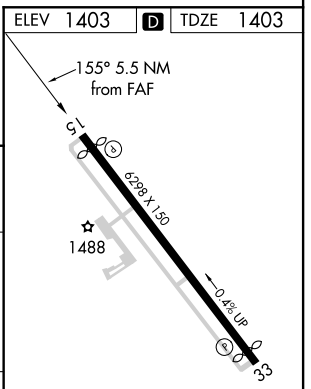
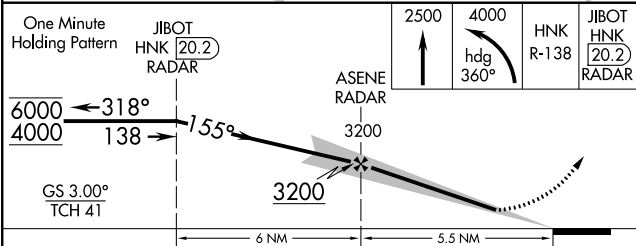
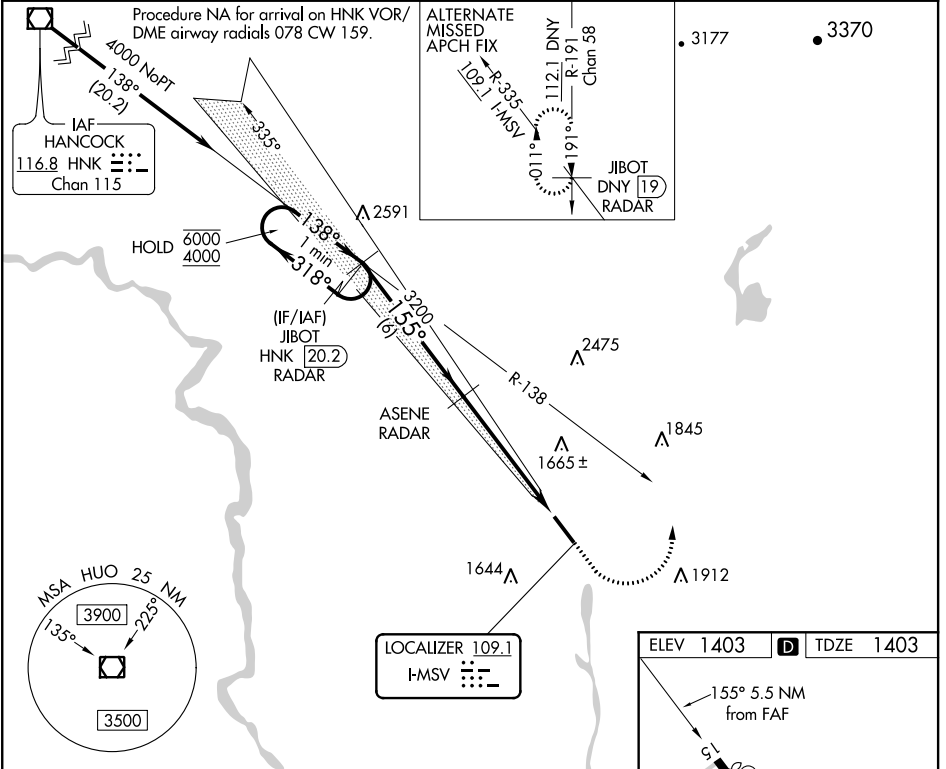
ILS or LOC RWY 15

SULLIVAN COUNTY INTL (MSV)

RADAR required.

▲ MISSED APPROACH: Climb to 2500 then climbing left turn to 4000 on heading 360° and HNK VOR/DME R-138 to JIBOT/HNK 20.2 DME/RADAR and hold.

AWOS-3PT 124.725	NEW YORK APP CON 132.75 363.1	CLNC DEL 121.6	UNICOM 122.8 (CTAF)
----------------------------	---	--------------------------	-------------------------------



CATEGORY	A	B	C	D
S-ILS 15		1653-3/4	250 (300-3/4)	
S-LOC 15	1960-1	557 (600-1)	1960-1 5/8	557 (600-1 5/8)
CIRCLING	1960-1	557 (600-1)	2020-1 3/4 617 (700-1 3/4)	2180-2 1/2 777 (800-2 1/2)

REIL Rwy 15 and 33

HIRL Rwy 15-33

NE-2, 25 MAR 2021 to 22 APR 2021

NE-2, 25 MAR 2021 to 22 APR 2021