

LOC/DME I-PHY 111.1 Chan 48	APP CRS 033°	Rwy Idg 4748 TDZE 1177 Apt Elev 1182
---	------------------------	---

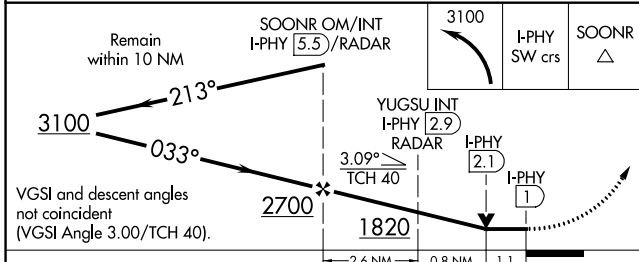
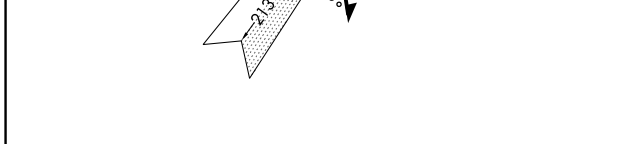
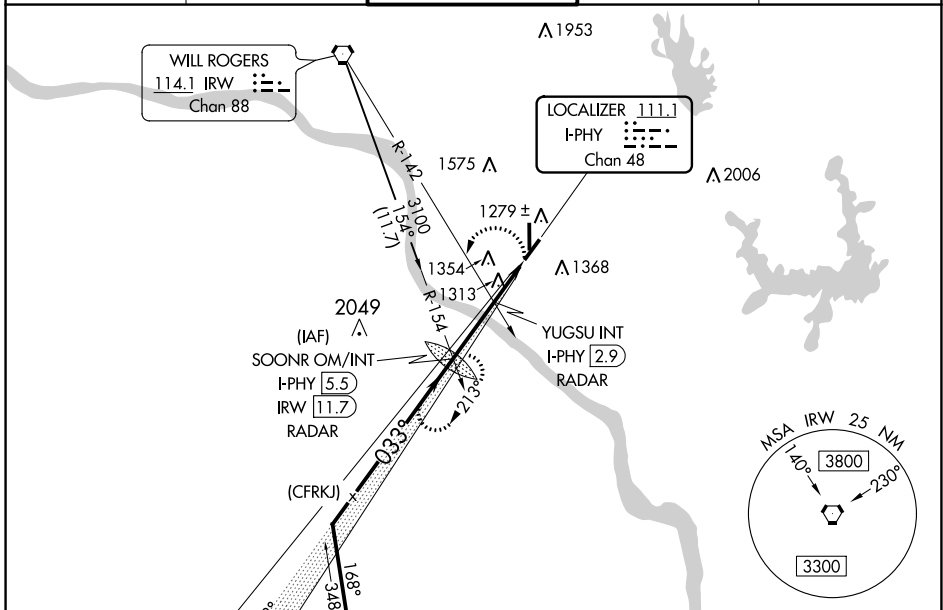
LOC RWY 3

UNIVERSITY OF OKLAHOMA WESTHEIMER (OUN)

⚠ When local altimeter setting not received, use Will Rogers World altimeter setting and increase all MDA 60 feet; increase S-3 Cat C/D visibility ¼ mile, Circling Cat C/D ¼ mile. For inop MALS increase S-3 Cat C/D visibility to 1½ mile. For inop MALS when using Will Rogers World altimeter setting, increase S-3 Cat C/D visibility to 1½ mile. Circling NA southeast of Rwy 3 and 21.

MALS
MISSED APPROACH: Climbing left turn to 3100 on I-PHY SW course to SOONR OM/INT/I-PHY 5.5 DME/RADAR and hold, continue climb-in-hold to 3100.

AWOS-3 119.55	OKE CITY APP CON 120.45 288.325	WESTHEIMER TOWER* 118.0 (CTAF) 0	GND CON 121.6	UNICOM 122.95
-------------------------	---	---	-------------------------	-------------------------



CATEGORY	A	B	C	D
S-3	1580-¾	403 (400-¾)	1580-1	403 (400-1)
C CIRCLING	1660-1	478 (500-1)	1940-2¼ 758 (800-2¼)	1940-2½ 758 (800-2½)

ELEV 1182	TDZE 1177
MRL Rwy 3-21 and 18-36	REIL Rwy 36
81	51.99 x 100
47.68 x 100	21
033° 4.5 NM from FAF	FAF to MAP 4.5 NM
Knots	60 90 120 150 180
Min:Sec	4:30 3:00 2:15 1:48 1:30

SC-1, 25 MAR 2021 to 22 APR 2021

SC-1, 25 MAR 2021 to 22 APR 2021