

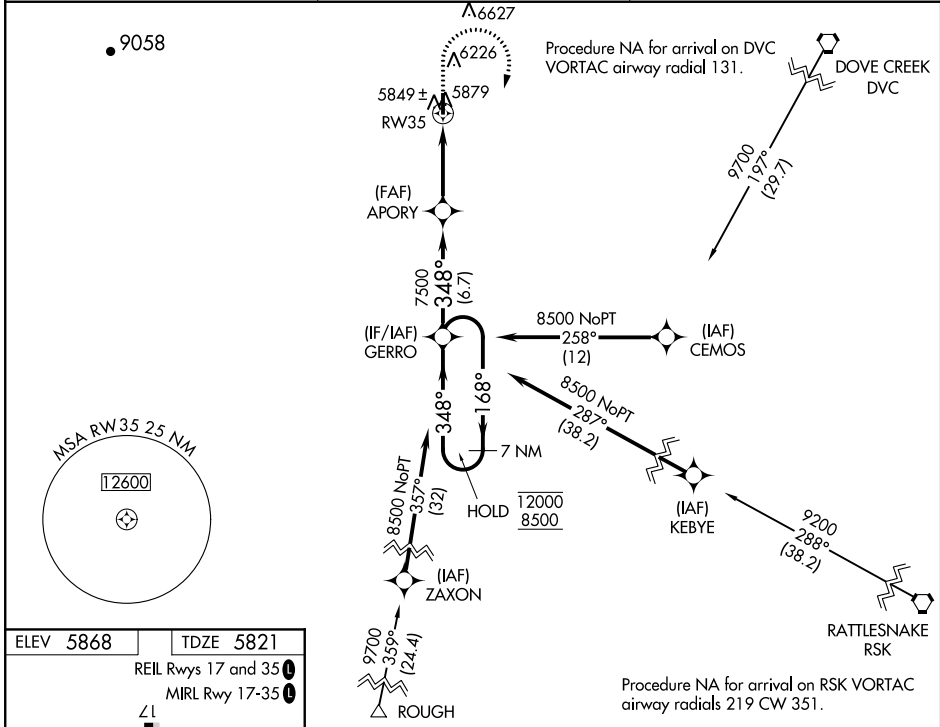
WAAS CH 63024 W35A	APP CRS 348°	Rwy Idg TDZE Apt Elev	5781 5821 5868
--	------------------------	-----------------------------	---

RNAV (GPS) RWY 35

BLANDING MUNI (BDG)

RNP APCH.	MISSED APPROACH: (Do not exceed 165K until GERRO) Climb to 6300 then climbing right turn to 8500 direct GERRO and hold.
-----------	--

AWOS-2 127.75	DENVER CENTER 127.55 343.95	UNICOM 122.8 (CTAF) 0
-------------------------	---------------------------------------	---------------------------------



ELEV 5868	TDZE 5821
-----------	-----------

REIL Rwy 17 and 35

MIRL Rwy 17-35

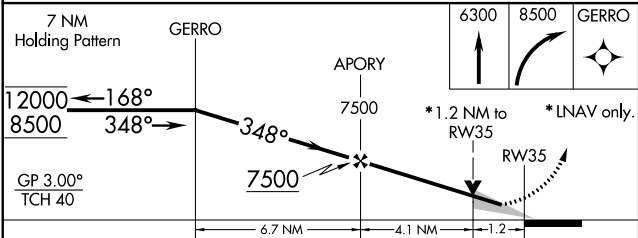
Z1

5781 X 75

1.6% UP

35

348° to RW35



CATEGORY	A	B	C	D
LPV DA	6071-1	250 (300-1)		NA
LNAV/VNAV DA	6077-1	256 (300-1)		NA
LNAV MDA	6200-1	379 (400-1)	6200-1¼ 379 (400-1¼)	NA
CIRCLING	6440-1	572 (600-1)	6460-1½ 592 (600-1½)	NA

SW-4, 25 MAR 2021 to 22 APR 2021

SW-4, 25 MAR 2021 to 22 APR 2021