

WAAS CH 61008 W04A	APP CRS 038°	Rwy Idg 6032 TDZE 511 Apt Elev 529
--	------------------------	---

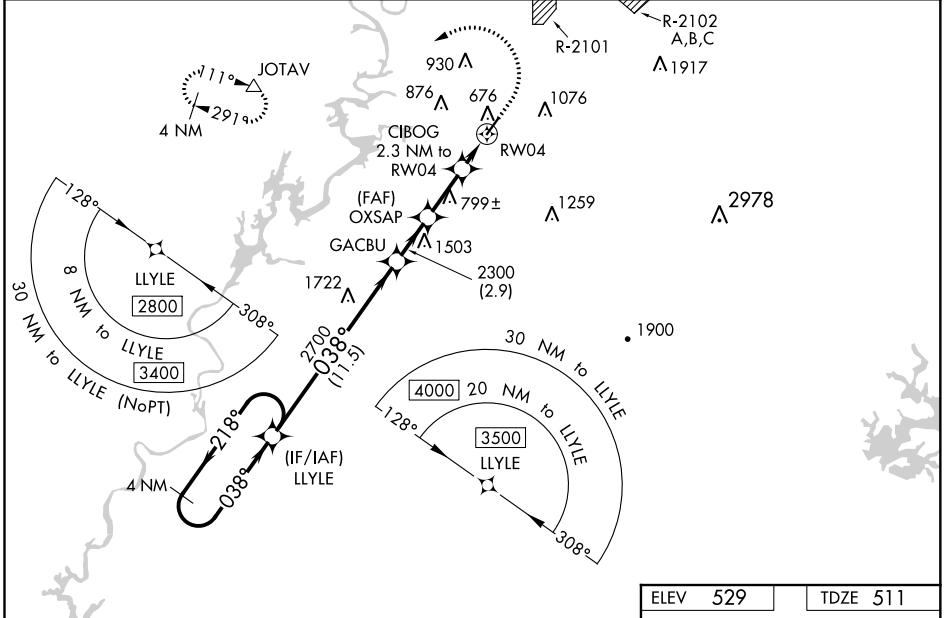
RNAV (GPS) RWY 4

TALLADEGA MUNI (ASN)

⚠ Baro-VNAV NA when using Anniston altimeter setting. For uncompensated Baro-VNAV systems, LNAV/VNAV NA below -1.6°C (4°F) or above 54°C (130°F). DME/DME RNP-0.3 NA. VDP NA with Anniston altimeter setting. When local altimeter setting not received, use Anniston altimeter setting and increase LPV DA to 744, LNAV/VNAV DA to 830, and all MDA 40 feet; increase LNAV/VNAV all Cats visibility and LNAV Cats C/D visibility 1/8 mile, and Circling Cat C visibility 1/4 mile.

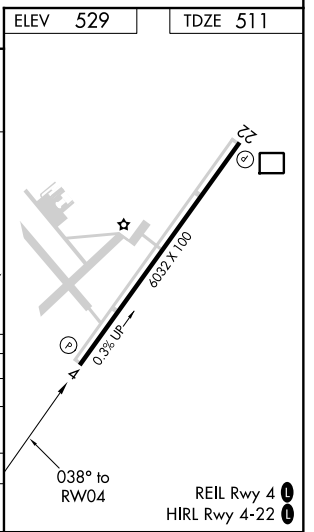
MISSED APPROACH:
Climb to 1300 then climbing left turn to 3700 direct JOTAV and hold.

AWOS-3PT 118.425	BIRMINGHAM APP CON 132.15 285.45	UNICOM 122.8 (CTAF) 0
----------------------------	--	---------------------------------



VGSI and RNAV glidepath not coincident (VGSI Angle 3.00/TCH 65).

4 NM Holding Pattern	LLYLE	GACBU	OXSAP	CIBOG	RWY04
2800	2700	2300	2300	2300	2300
GP 3.00° TCH 45					
	11.5 NM	2.9 NM	3.2 NM	0.8 NM	1.5 NM
CATEGORY	A	B	C	D	
LPV DA		711-3/4	200 (200-3/4)		
LNAV/VNAV DA		797-7/8	286 (300-7/8)		
LNAV MDA	1060-1	549 (600-1)	1060-1 1/8	549 (600-1 1/8)	
C CIRCLING	1140-1 611 (700-1)	1180-1 651 (700-1)	1380-2 1/2 851 (900-2 1/2)	1500-3 971 (1000-3)	



SE-4, 25 MAR 2021 to 22 APR 2021

SE-4, 25 MAR 2021 to 22 APR 2021