

WAAS CH 93720 W22A	APP CRS 218°	Rwy Idg TDZE Apt Elev	6032 529 529
--	------------------------	-----------------------------	---

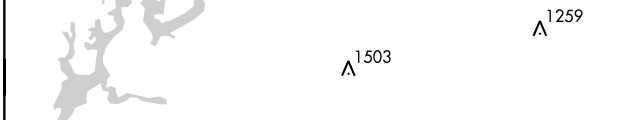
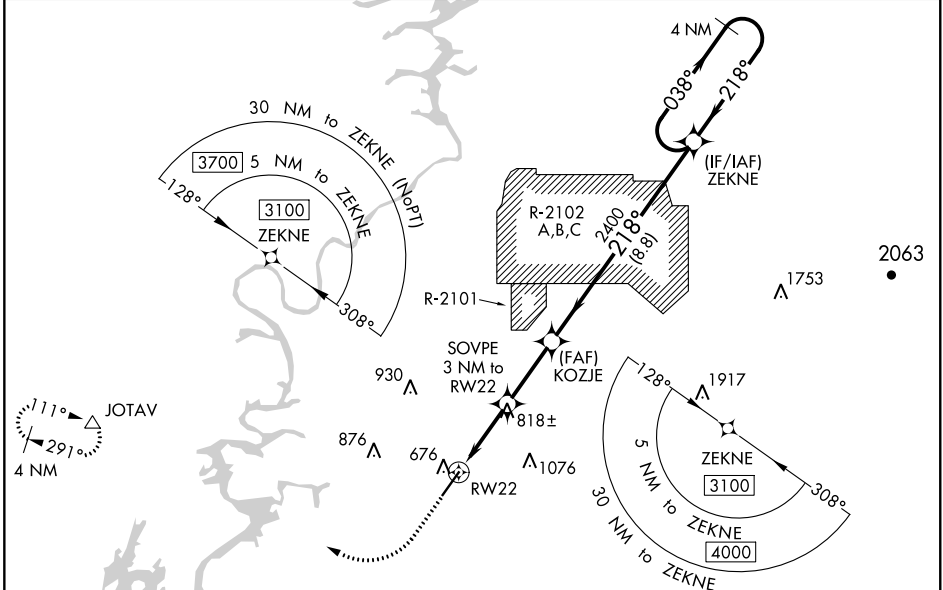
RNAV (GPS) RWY 22

TALLADEGA MUNI (ASN)

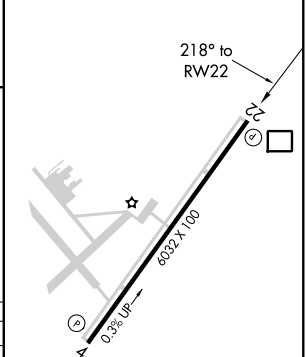
Baro-VNAV NA when using Annonston altimeter setting. For uncompensated Baro-VNAV systems, LNAV/VNAV NA below -16°C (4°F) or above 54°C (130°F). DME/DME RNP-0.3 NA. VDP NA with Annonston altimeter setting. When local altimeter setting not received, use Annonston altimeter setting and increase LPV DA to 856, LNAV/VNAV DA to 1075, and all MDA 40 feet; increase LPV and LNAV/VNAV all Cats visibility and LNAV Cats C/D visibility 1/8 mile. Increase Circling Cat C visibility 1/4 SM. Rwy 22 Helicopter visibility reduction below 3/4 SM NA.

MISSED APPROACH: Climb to 1200 then climbing right turn to 3700 direct JOTAV and hold, continue climb in hold to 3700.

AWOS-3PT 118.425	BIRMINGHAM APP CON 132.15 285.45	UNICOM 122.8 (CTAF) 0
----------------------------	--	---------------------------------



ELEV 529	TDZE 529
----------	----------



1200	3700	JOTAV	
*LNAV only.			
RW22	SOVPE 3 NM to RW22	KOZJE 2400	ZEKNE 3100
1.6 NM	1.4 NM	2.7 NM	8.8 NM
	*1520	2400	038°
			218°
			4 NM Holding Pattern
			GP 3.00° TCH 45

CATEGORY	A	B	C	D
LPV DA		821-1	292 (300-1)	
LNAV/VNAV DA		1040-1 3/4	511 (600-1 3/4)	
LNAV MDA	1080-1	551 (600-1)	1080-1 5/8	551 (600-1 5/8)
CIRCLING	1140-1 611 (700-1)	1180-1 651 (700-1)	1380-2 1/2 851 (900-2 1/2)	1500-3 971 (1000-3)

REIL Rwy 4 0
HIRL Rwy 4-22 0

TALLADEGA MUNI (ASN) RNAV (GPS) RWY 22

SE-4, 25 MAR 2021 to 22 APR 2021

SE-4, 25 MAR 2021 to 22 APR 2021