

APP CRS 127°	Rwy Idg 4494
	TDZE 882
	Apt Elev 887

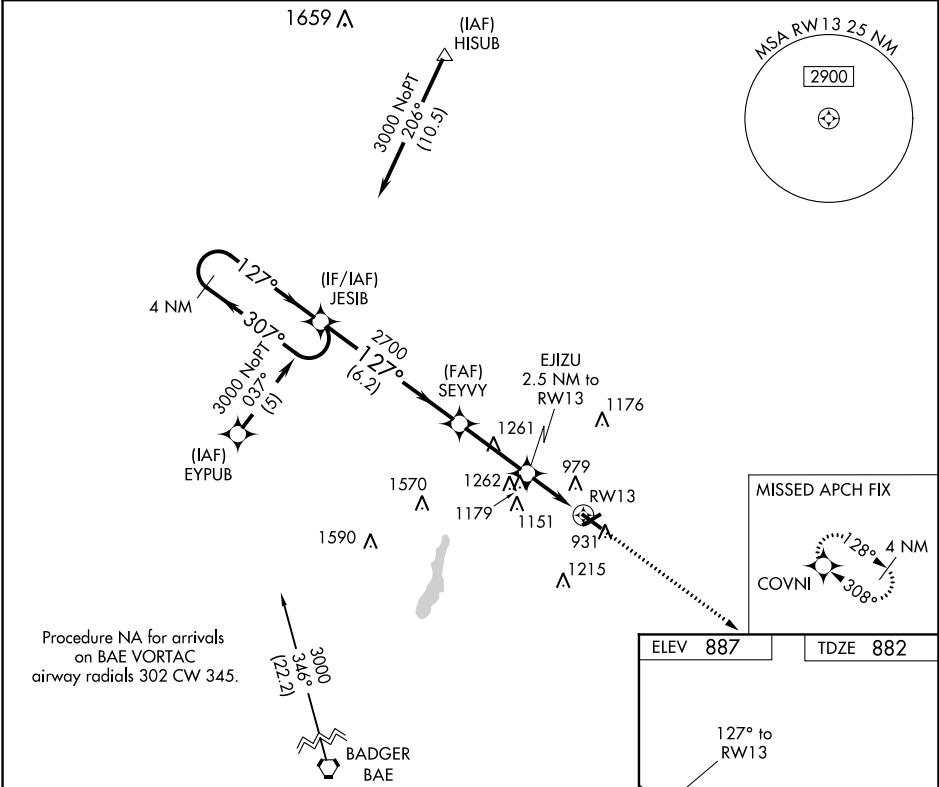
RNAV (GPS) RWY 13

WEST BEND MUNI (E/TB)

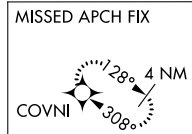
⚠ DME/DME RNP-0.3 NA. When local altimeter setting not received, use Milwaukee/Lawrence J. Timmerman altimeter setting and increase all MDA 80 feet, and increase LNAV Cats C/D and Circling Cat C visibility ½ mile, and Circling Cat D visibility ¼ mile. Night landing: Rwy 6 NA. Helicopter visibility reduction below ¾ SM NA.

MISSED APPROACH:
Climb to 3000 direct
COVNI and hold.

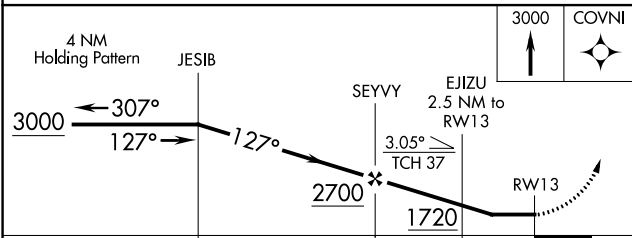
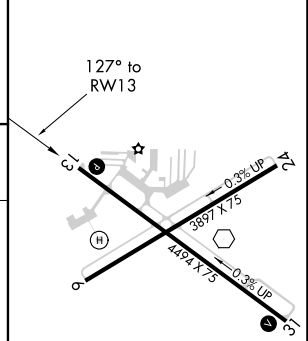
AWOS-3 120.0	MILWAUKEE APP CON 125.35 307.0	CLNC DEL 124.75	UNICOM 122.8 (CTAF) 0
------------------------	--	---------------------------	---------------------------------



Procedure NA for arrivals on BAE VORTAC airway radials 302 CW 345.



ELEV 887	TDZE 882
-----------------	-----------------



CATEGORY	A	B	C	D
LNAV MDA	1480-1 598 (600-1)		1480-1½ 598 (600-1½)	1480-1¾ 598 (600-1¾)
CIRCLING	1480-1 593 (600-1)		1480-1½ 593 (600-1½)	1520-2 633 (700-2)

REIL Rwy 13 and 31 **0**
MIRL Rwy 6-24 and 13-31 **0**

EC-3, 25 MAR 2021 to 22 APR 2021

EC-3, 25 MAR 2021 to 22 APR 2021