

VOR/DME PVD 115.6 Chan 103	APP CRS 164°	Rwy Idg TDZE Apt Elev	2623 162 172
--	------------------------	-----------------------------	---

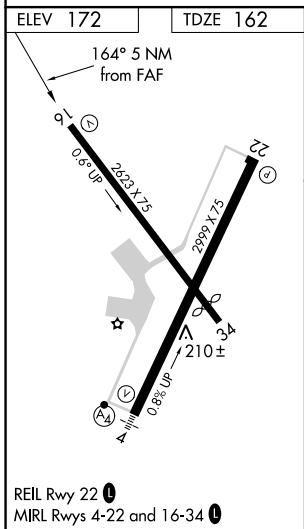
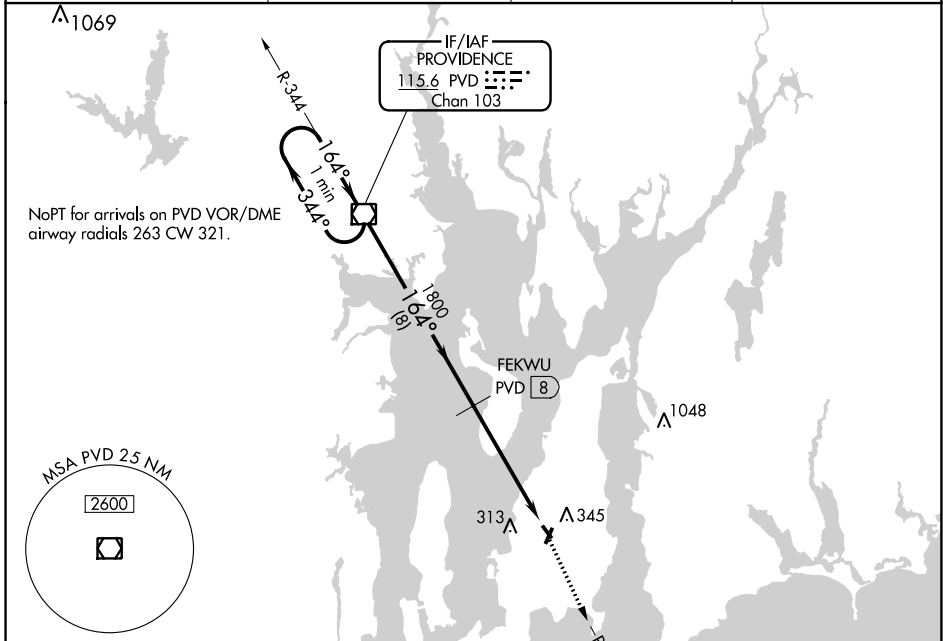
VOR/DME RWY 16

NEWPORT STATE (UUU)

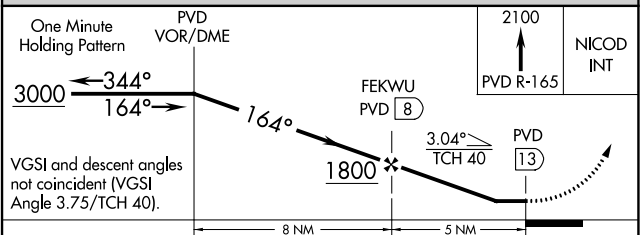
⚠ When local altimeter setting not received, use Providence altimeter setting and increase all MDA 60 feet; increase S-16 Cat C visibility ¼ mile. Circling Rwy 4, 22, 34 NA at night. Rwy 16 helicopter visibility reduction below ¾ SM NA.

⚠ MISSED APPROACH: Climb to 2100 via PVD R-165 to NICOD INT/21.5 DME and hold.

ASOS 132.075	PROVIDENCE APP CON* 128.7 269.525	CLNC DEL 127.25	UNICOM 123.05 (CTAF)
------------------------	---	---------------------------	--------------------------------



ELEV 172	TDZE 162
----------	----------



VGSI and descent angles not coincident (VGSI Angle 3.75/TCH 40).				
CATEGORY	A	B	C	D
S-16	680-1	518 (600-1)	680-1½ 518 (600-1½)	NA
CIRCLING	700-1	528 (600-1)	700-1½ 528 (600-1½)	NA

NE-1, 25 MAR 2021 to 22 APR 2021

NE-1, 25 MAR 2021 to 22 APR 2021