

APP CRS <b>166°</b>	Rwy Idg <b>2623</b>
	TDZE <b>162</b>
	Apt Elev <b>172</b>

# RNAV (GPS) RWY 16

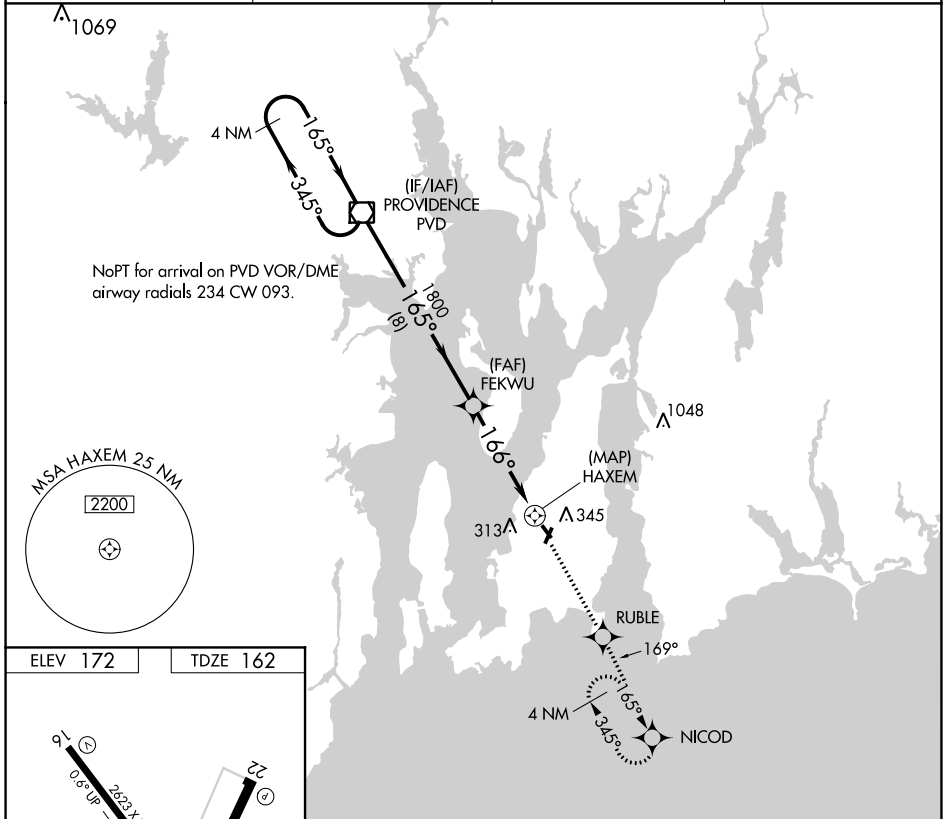
NEWPORT STATE (UUU)

RNP APCH

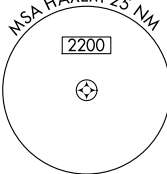
When local altimeter setting not received, use Providence altimeter setting and increase all MDAs 60 feet. Circling Rwy 4, 22, 34 NA at night.  
Rwy 16 helicopter visibility reduction below 3/4 SM NA.

MISSED APPROACH: Climb to 2100 direct RUBLE and via 169° track to NICOD and hold.

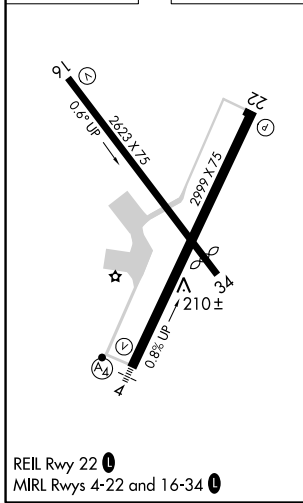
ASOS <b>132.075</b>	PROVIDENCE APP CON * <b>128.7 269.525</b>	CLNC DEL <b>127.25</b>	UNICOM <b>123.05 (CTAF)</b>
------------------------	--	---------------------------	--------------------------------



NoPT for arrival on PVD VOR/DME airway radials 234 CW 093.



ELEV 172	TDZE 162
----------	----------



4 NM Holding Pattern	PVD VOR/DME	2100	RUBLE	tr 169°	NICOD
3000 ← 345°	165° →	↑	◆	↔	◆
VGSI and descent angles not coincident (VGSI Angle 3.75/TCH 40).					
		8 NM	4.5 NM	0.5	
CATEGORY	A	B	C	D	
LNAV MDA	600-1	438 (500-1)	600-1 1/4 438 (500-1 1/4)	NA	
CIRCLING	700-1	528 (600-1)	700-1 1/2 528 (600-1 1/2)	NA	

NE-1, 25 MAR 2021 to 22 APR 2021

NE-1, 25 MAR 2021 to 22 APR 2021