

WAAS CH <b>50526</b> <b>W08A</b>	APP CRS <b>076°</b>	Rwy Idg <b>10000</b> TDZE <b>29</b> Apt Elev <b>29</b>
--	------------------------	--

# RNAV (GPS) Z RWY 8

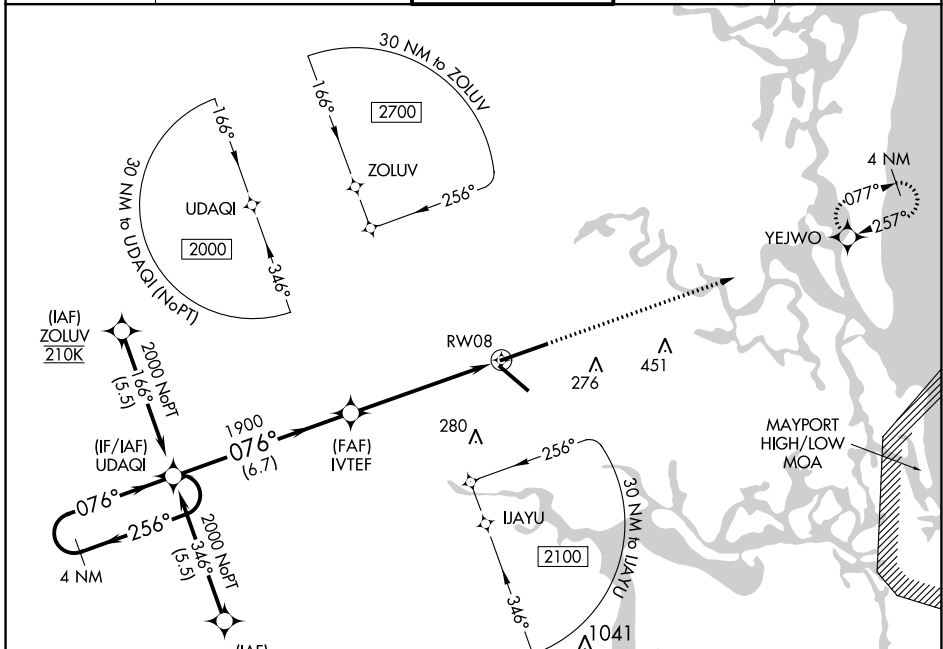
JACKSONVILLE INTL (JAX)

▼ For uncompensated Baro-VNAV systems, procedure NA below -5°C (23°F) or above 54°C (130°F). DME/DME RNP-0.3 NA.

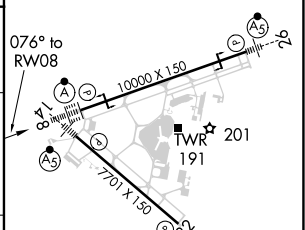
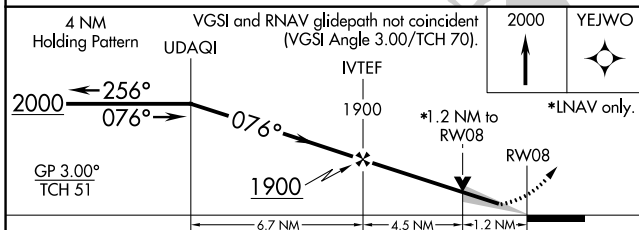
ALSF-2

MISSED APPROACH: Climb to 2000 direct YEJWO and hold.

D-ATIS <b>125.85</b>	JACKSONVILLE APP CON <b>119.0 269.9</b>	JACKSONVILLE TOWER <b>118.3 317.7</b>	GND CON <b>121.9 348.6</b>	CLNC DEL <b>119.5 290.275</b>
-------------------------	--	--	-------------------------------	----------------------------------



ELEV 29	TDZE 29
---------	---------



CATEGORY	A	B	C	D
LPV DA		229/18	200 (200-½)	
LNAV/VNAV DA		363/32	334 (400-⅙)	
LNAV MDA	480/24	451 (500-½)	480/45	451 (500-⅔)
CIRCLING	520-1	491 (500-1)	520-1½ 491 (500-1½)	640-2 611 (700-2)

REIL Rwy 32  
TDZ/CL Rwys 8, 14, and 26  
HIRL Rwys 8-26 and 14-32

SE-3, 25 MAR 2021 to 22 APR 2021

SE-3, 25 MAR 2021 to 22 APR 2021