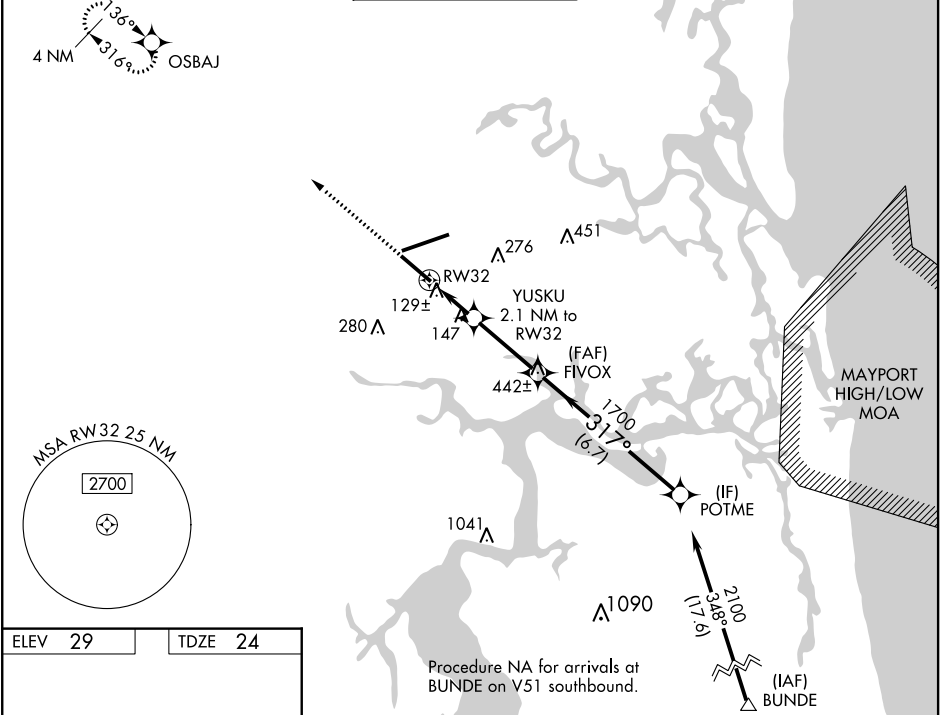


WAAS CH 40199 W32A	APP CRS 317°	Rwy Idg TDZE Apt Elev	7701 24 29
--	------------------------	-----------------------------	---------------------------------------

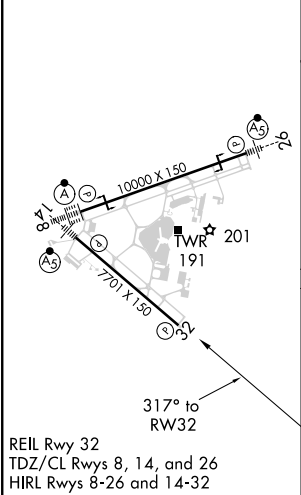
RNAV (GPS) Z RWY 32

JACKSONVILLE INTL (JAX)

<p>▼ For uncompensated Baro-VNAV systems, procedure NA below -5°C (23°F) or above 54°C (130°F). DME/DME RNP-0.3 NA. Helicopter visibility reduction below ¾ SM NA.</p>		<p>MISSED APPROACH: Climb to 2000 direct OSBAJ and hold.</p>		
D-ATIS 125.85	JACKSONVILLE APP CON 119.0 269.9	JACKSONVILLE TOWER 118.3 317.7	GND CON 121.9 348.6	CLNC DEL 119.5 290.275



ELEV 29	TDZE 24
---------	---------



JACKSONVILLE, FLORIDA
Amdt 2D 15OCT15

2000	OSBAJ	VGSi and RNAV glidepath not coincident (VGSi Angle 3.00/TCH 67).		POTME
*LNAV only.		*1 NM to RW32	FIVOX 1700	2100
	RW32	*740	1700	GP 3.00° TCH 50
	1 NM	-1.1 NM	3 NM	6.7 NM
CATEGORY	A	B	C	D
LPV DA		336-1	312 (400-1)	
LNAV/VNAV DA		387-1¼	363 (400-1¼)	
LNAV MDA		400-1	376 (400-1)	
CIRCLING	520-1	491 (500-1)	520-1½ 491 (500-1½)	640-2 611 (700-2)

SE-3, 25 MAR 2021 to 22 APR 2021

SE-3, 25 MAR 2021 to 22 APR 2021