


WAAS CH <b>97626</b> <b>W26A</b>	APP CRS <b>257°</b>	Rwy Idg <b>10000</b> TDZE <b>27</b> Apt Elev <b>29</b>
--	------------------------	--

# RNAV (GPS) Z RWY 26

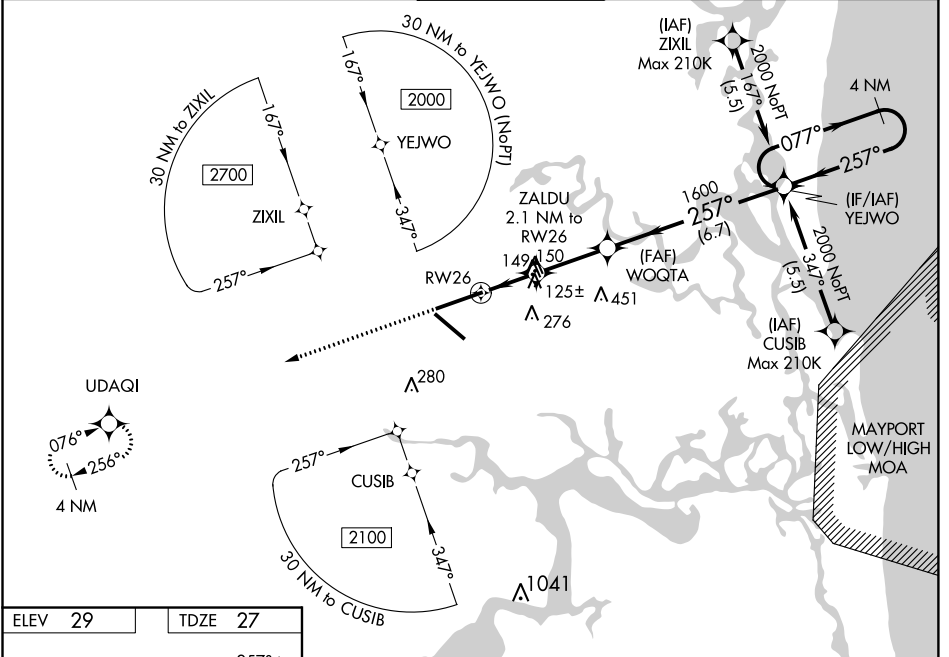
JACKSONVILLE INTL (JAX)

For uncompensated Baro-VNAV systems, LNAV/VNAV NA below -5°C (23°F) or above 54°C (130°F). For inoperative MALS/R, increase LNAV/VNAV all Cats visibility to RVR 4500 and increase LNAV Cats C/D visibility to RVR 5500. DME/DME RNP-0.3 NA.

MALS/R 

MISSED APPROACH: Climb to 2000 direct UDAQI and hold.

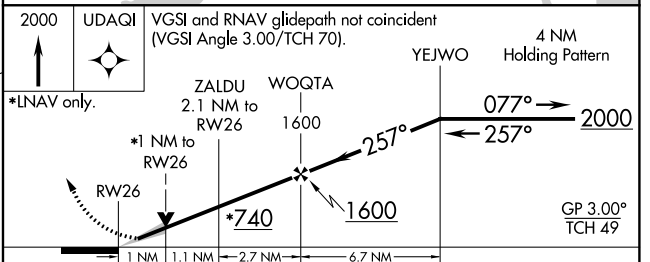
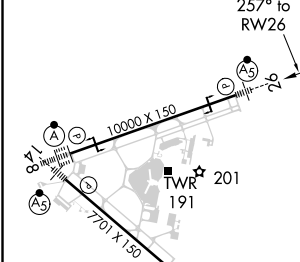
D-ATIS <b>125.85</b>	JACKSONVILLE APP CON <b>119.0 269.9</b>	JACKSONVILLE TOWER <b>118.3 317.7</b>	GND CON <b>121.9 348.6</b>	CLNC DEL <b>119.5 290.275</b>
-------------------------	--	--	-------------------------------	----------------------------------



SE-3, 25 MAR 2021 to 22 APR 2021

SE-3, 25 MAR 2021 to 22 APR 2021

ELEV 29	TDZE 27
---------	---------



CATEGORY	A	B	C	D
LPV DA	227/18 200 (200-½)			
LNAV/VNAV DA	297/24 270 (300-½)			
LNAV MDA	400/24	373 (400-½)	400/35	373 (400-¾)
CIRCLING	520-1	491 (500-1)	520-1½	640-2 611 (700-2)

REIL Rwy 32  
TDZ/CL Rwy 8, 14, and 26  
HIRL Rwy 8-26 and 14-32