

APP CRS	Rwy Idg	7701
317°	TDZE	24
	Apt Elev	29

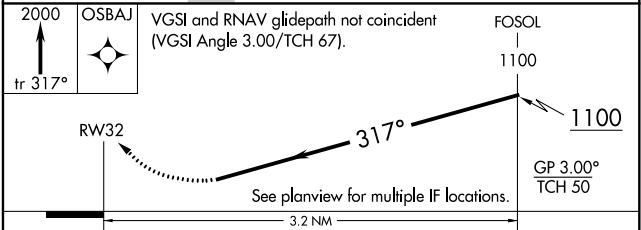
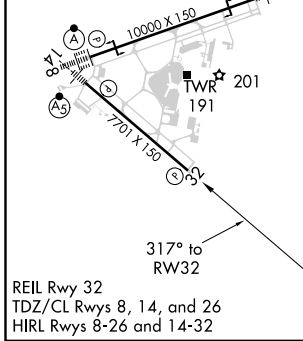
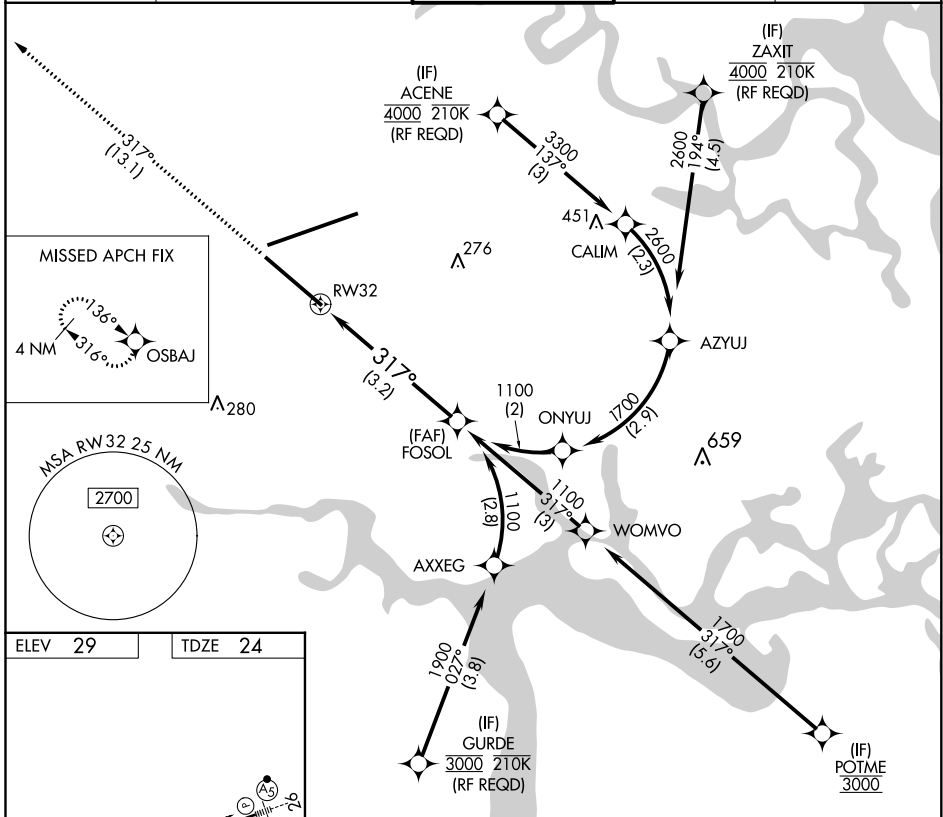
RNAV (RNP) Y RWY 32

JACKSONVILLE INTL (JAX)

▼ For uncompensated Baro-VNAV systems, procedure NA below -5°C (23°F) or above 54°C (130°F). GPS required.

MISSED APPROACH: Climb to 2000 on track 317° to OSBAJ and hold.

D-ATIS 125.85	JACKSONVILLE APP CON 119.0 269.9	JACKSONVILLE TOWER 118.3 317.7	GND CON 121.9 348.6	CLNC DEL 119.5 290.275
-------------------------	--	--	-------------------------------	----------------------------------



CATEGORY	A	B	C	D
RNP 0.11 DA		359-1 1/8	334 (400-1 1/8)	
RNP 0.30 DA		423-1 1/8	399 (400-1 1/8)	

AUTHORIZATION REQUIRED

SE-3, 25 MAR 2021 to 22 APR 2021

SE-3, 25 MAR 2021 to 22 APR 2021