

APP CRS	Rwy Idg	<b>10000</b>
<b>257°</b>	TDZE	<b>27</b>
	Apt Elev	<b>29</b>

# RNAV (RNP) Y RWY 26

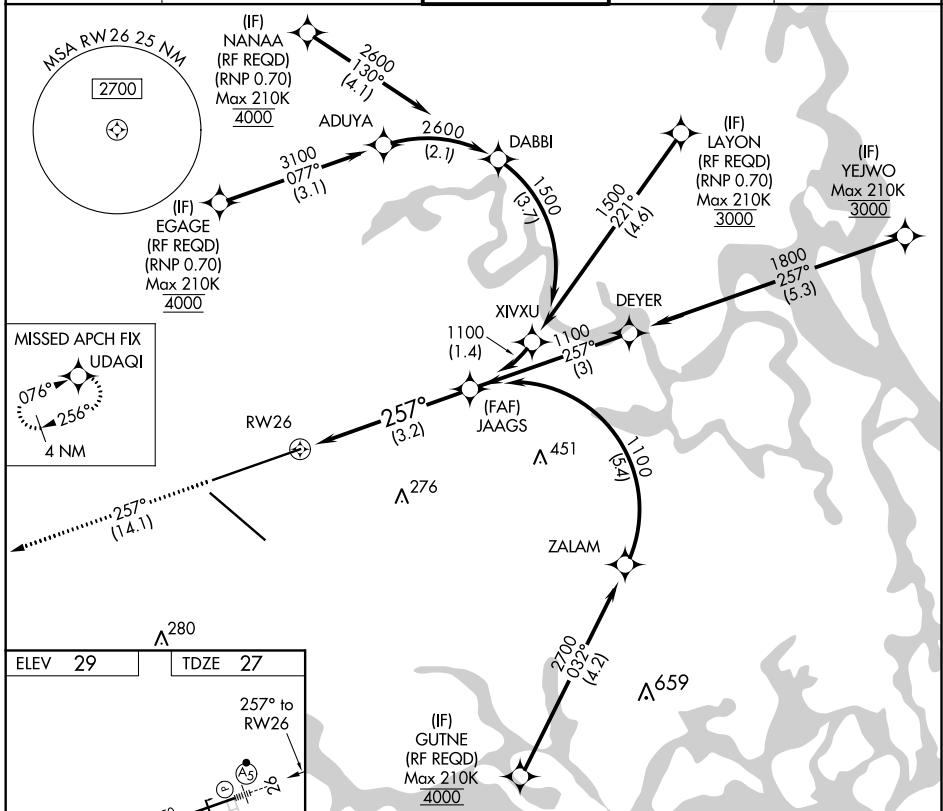
JACKSONVILLE INTL (JAX)

For uncompensated Baro-VNAV systems, procedure NA below -5°C (23°F) or above 54°C (130°F). GPS required. For inoperative MALSR, increase RNP 0.30 all Cats visibility to 1¼ mile.



MISSED APPROACH: Climb to 2000 on track 257° to UDAQI and hold.

D-ATIS	JACKSONVILLE APP CON	JACKSONVILLE TOWER	GND CON	CLNC DEL
<b>125.85</b>	<b>119.0 269.9</b>	<b>118.3 317.7</b>	<b>121.9 348.6</b>	<b>119.5 290.275</b>



SE-3, 25 MAR 2021 to 22 APR 2021

SE-3, 25 MAR 2021 to 22 APR 2021

ELEV 29	TDZE 27
---------	---------

257° to RWY 26

10000 X 150

7701 X 150

TWR 191, 201

REIL Rwy 32  
TDZ/CL Rwy 8, 14, and 26  
HIRL Rwy 8-26 and 14-32

2000 UDAQI VGSi and RNAV glidepath not coincident (VGSi Angle 3.00/TCH 70).

See planview for multiple IF locations.

CATEGORY	A	B	C	D
RNP 0.30 DA	400/40		373 (400-¾)	

**AUTHORIZATION REQUIRED**