

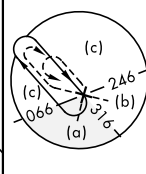
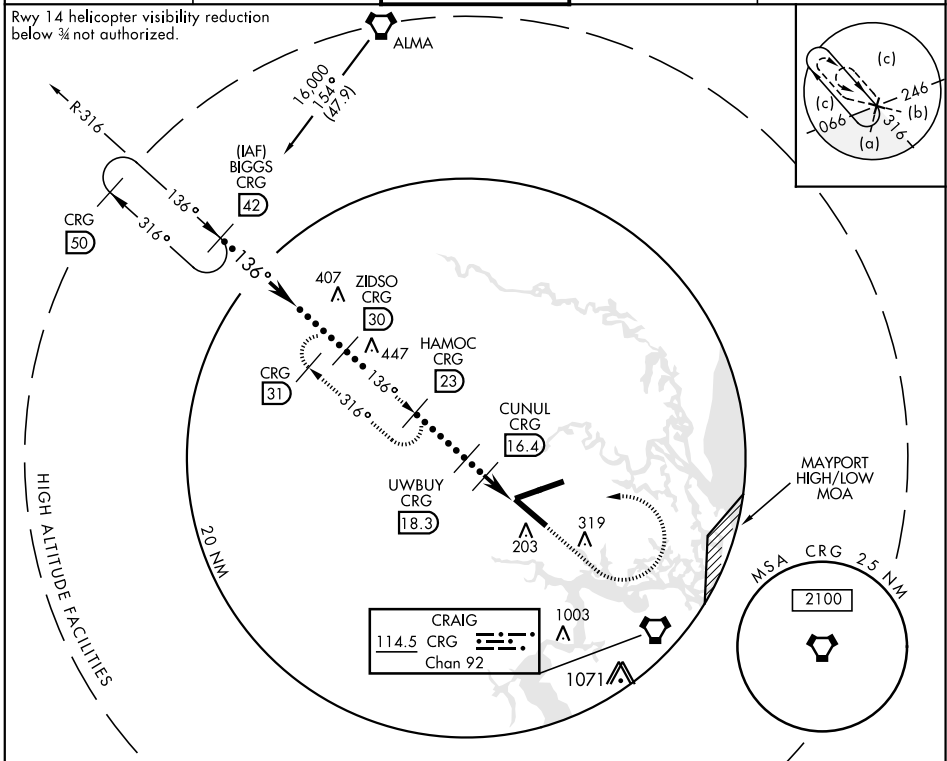
HI-TACAN RWY 14

VORTAC CRG 114.5 Chan 92	APCH CRS 136°	Rwy ldg TDZE 27 Arprt Elev 29	JAL-5570 [USAF]	JACKSONVILLE INTL (KJAX)
--	-------------------------	---	-----------------	--------------------------

* When ALS inop, increase vis to 1 mile.

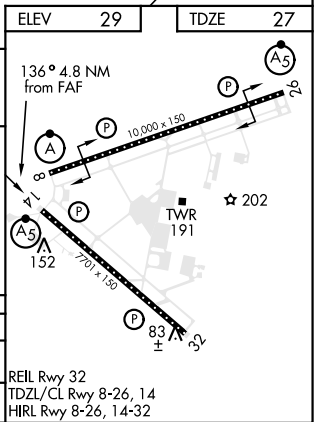
MALS R (A5) MISSED APPROACH: Climb to 2000 then climbing left turn to 4000 on CRG VORTAC R-316 to HAMOC 23 DME and hold.

ATIS 125.85	JACKSONVILLE APP CON 119.0 269.9	JACKSONVILLE TOWER 118.3 317.7	GND CON 121.9 348.6	CLNC DEL 119.5 290.275
-----------------------	--	--	-------------------------------	----------------------------------



EMERG SAFE ALT 100 NM 2800 FROM CRG VORTAC

BIGGS R-316 16,000	ZIDSO 6000	VGSI and ILS glidepath not coincident. (VGS1 angle 3.00/TCH 70).	2000	4000 CRG R-316	HAMOC CRG 23
3.31° TCH 55	HAMOC 1900	UWBUBY 1700	CUNUL 1100	13.5	14.5
← 2.9 NM →					
CATEGORY	C	D	E		
S-14*	400-3/4	373 (400-3/4)			
CIRCLING	520-1 1/2 491 (500-1 1/2)	640-2 611 (700-2)	760-2 1/2 731 (800-2 1/2)		



HI-TACAN RWY 14

SE-3, 25 MAR 2021 to 22 APR 2021

SE-3, 25 MAR 2021 to 22 APR 2021