

HI-ILS or LOC RWY 26

LOC I-PEK 110.3	APCH CRS 257°	Rwy ldg TDZE Arprt Elev 10,000 27 29
---------------------------	-------------------------	--

JAL-5570 [USAF]

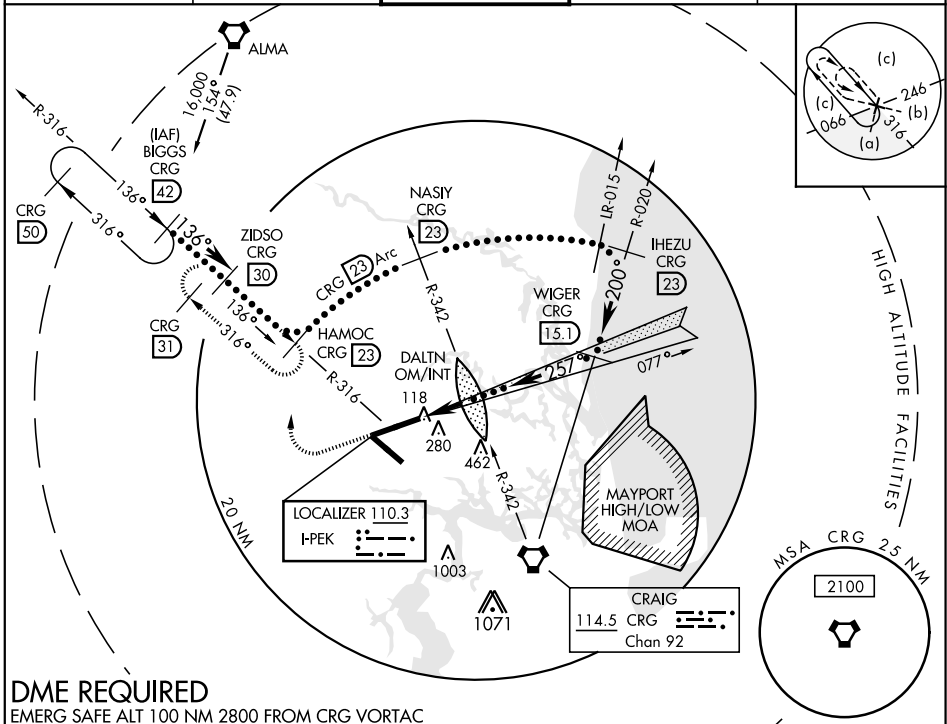
JACKSONVILLE INTL (KJAX)

* When ALS inop, increase RVR to 40, vis to 3/4 mile.
 ** When ALS inop, increase vis to 1 3/8 miles.
 *** When ALS inop, increase RVR to 55, vis to 1 mile.



MISSED APPROACH: Climb to 1200 then climbing right turn to 4000 on heading 360° and CRG R-316 to HAMOC 23 DME and hold, continue climb-in-hold to 4000.

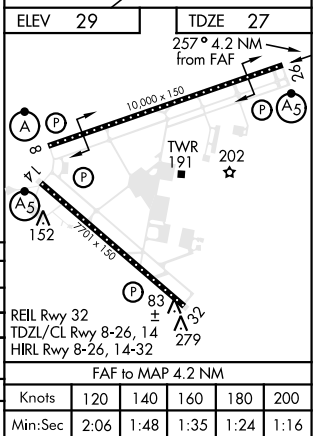
ATIS 125.85	JACKSONVILLE APP CON 119.0 269.9	JACKSONVILLE TOWER 118.3 317.7	GND CON 121.9 348.6	CLNC DEL 119.5 290.275
-----------------------	--	--	-------------------------------	----------------------------------



DME REQUIRED

EMERG SAFE ALT 100 NM 2800 FROM CRG VORTAC

1200	4000	BIGGS R-316	ZIDSO R-316	HAMOC R-316	NASIY R-342	IHEZU R-020
↑	↻	42	30	23	23	23
VGS1 and ILS glidepath not coincident. (VGS1 angle 3.00/TCH 70). GS 3.00° TCH 49						
16,000 6000 4000 2000 1411 520 1600						
CATEGORY C D E						
S-ILS 26* 227/18 200 (200-3/8)						
S-LOC 26*** 520/50 493 (500-1)						
CIRCLING 520-1 1/2 640-2 760-2 1/2 491 (500-1 1/2) 611 (700-2) 731 (800-2 1/2)						
ZETRI FIX MINIMUMS (DUAL VOR RECEIVERS REQUIRED)						
*** S-LOC 26 † 400/35 373 (400-3/8)						



HI-ILS or LOC RWY 26

SE-3, 25 MAR 2021 to 22 APR 2021

SE-3, 25 MAR 2021 to 22 APR 2021