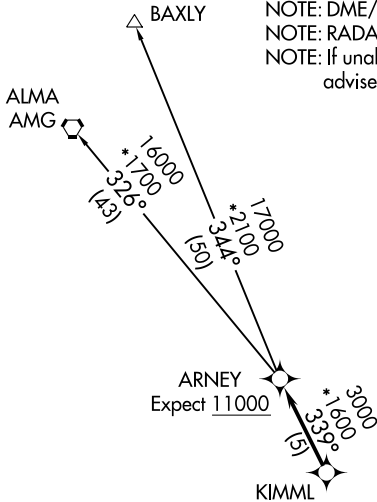


# ARNEY TWO DEPARTURE (RNAV)

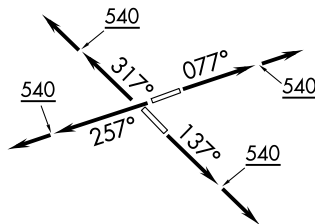
**TOP ALTITUDE:**  
**3000**

NOTE: RNAV 1.  
NOTE: Turbojets only.  
NOTE: DME/DME/IRU or GPS Required.  
NOTE: RADAR Required.  
NOTE: If unable to accept climb rate, advise ATC on initial contact.

D-ATIS 125.85  
CLNC DEL 119.5 290.275  
GND CON 121.9 348.6  
JACKSONVILLE TOWER 118.3 317.7  
JACKSONVILLE DEP CON 127.0 292.15



TAKEOFF MINIMUMS:  
Rwys 8, 14, 26, 32: Standard with minimum climb of 500' per NM to 540.



NOTE: Chart not to scale.



## DEPARTURE ROUTE DESCRIPTION

TAKEOFF RUNWAY 8: Climb heading 077° to 540, then climb to assigned altitude on heading 077° or as assigned by ATC, thence . . . .

TAKEOFF RUNWAY 14: Climb heading 137° to 540, then climb to assigned altitude on heading 137° or as assigned by ATC, thence . . . .

TAKEOFF RUNWAY 26: Climb heading 257° to 540, then climb to assigned altitude on heading 257° or as assigned by ATC, thence . . . .

TAKEOFF RUNWAY 32: Climb heading 317° to 540, then climb to assigned altitude on heading 317° or as assigned by ATC, thence . . . .

. . . . expect radar vectors to KIMML, then on track 339° to ARNEY. Maintain 3000 or as assigned by ATC, expect clearance to filed altitude within ten (10) minutes after departure.

ALMA TRANSITION (ARNEY2.AMG):  
BAXLY TRANSITION (ARNEY2.BAXLY):

# ARNEY TWO DEPARTURE (RNAV)