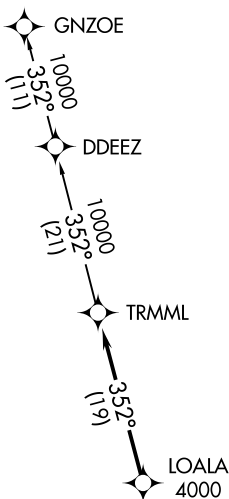


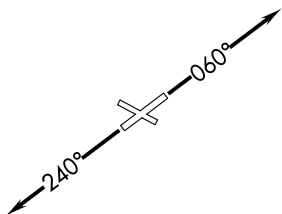
**TOP ALTITUDE:
ASSIGNED BY ATC**



- ATIS 134.55
- CLNC DEL 121.6
- GND CON 121.6
- ANN ARBOR TOWER ★ 120.3 (CTAF)
- DETROIT DEP CON 118.95 284.0

TAKEOFF MINIMUMS:
 Rwys 6, 24: Standard.
 Rwys 12, 30: NA-Environmental.

- NOTE: RNAV 1.
- NOTE: RADAR required.
- NOTE: DME/DME/IRU or GPS required.
- NOTE: Turbojet departures at/above 10000, maintain 280K until advised by ATC.



NOTE: Chart not to scale.

DEPARTURE ROUTE DESCRIPTION

TAKEOFF RUNWAY 6: Climb on heading 060° or as assigned for RADAR vectors to cross LOALA at or above 4000, thence...

TAKEOFF RUNWAY 24: Climb on heading 240° or as assigned for RADAR vectors to cross LOALA at or above 4000, thence...

....on track 352° to TRMML, then on (transition). Maintain ATC assigned altitude, expect filed altitude 10 minutes after departure.

GNZOE TRANSITION (TRMML3.GNZOE):