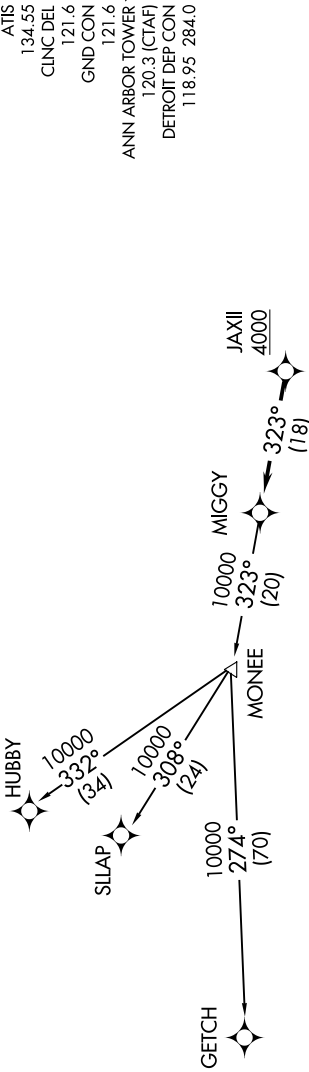


EC-1, 25 MAR 2021 to 22 APR 2021



**TOP ALTITUDE:  
ASSIGNED BY ATC**

- NOTE: RNAV 1.
- NOTE: RADAR required.
- NOTE: DME/DME/IRU or GPS required.
- NOTE: Turbojet departures at/above 10000, maintain 280K until advised by ATC.
- NOTE: GETCH TRANSITION: For use by KMKE area arrivals only, or as assigned by ATC.

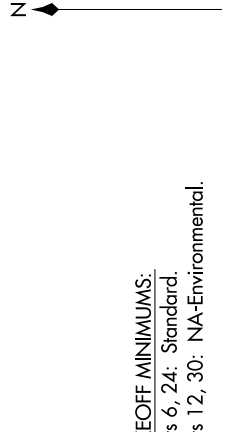
**DEPARTURE ROUTE DESCRIPTION**

**TAKEOFF RUNWAY 6:** Climb on heading 060° or as assigned for RADAR vectors to cross JAXII at or above 4000, thence...

**TAKEOFF RUNWAY 24:** Climb on heading 240° or as assigned for RADAR vectors to cross JAXII at or above 4000, thence...

...on track 323° to MIGGY, then on (transition). Maintain ATC assigned altitude, expect filed altitude 10 minutes after departure.

- GETCH TRANSITION (MIGGY2.GETCH):
- HUBBY TRANSITION (MIGGY2.HUBBY):
- SLLAP TRANSITION (MIGGY2.SLLAP):



**TAKEOFF MINIMUMS:**  
 Rwy 6, 24: Standard.  
 Rwys 12, 30: NA-Environmental.

NOTE: Chart not to scale.

EC-1, 25 MAR 2021 to 22 APR 2021