

APP CRS	Rwy Idg	5900
251°	TDZE	48
	Apt Elev	52

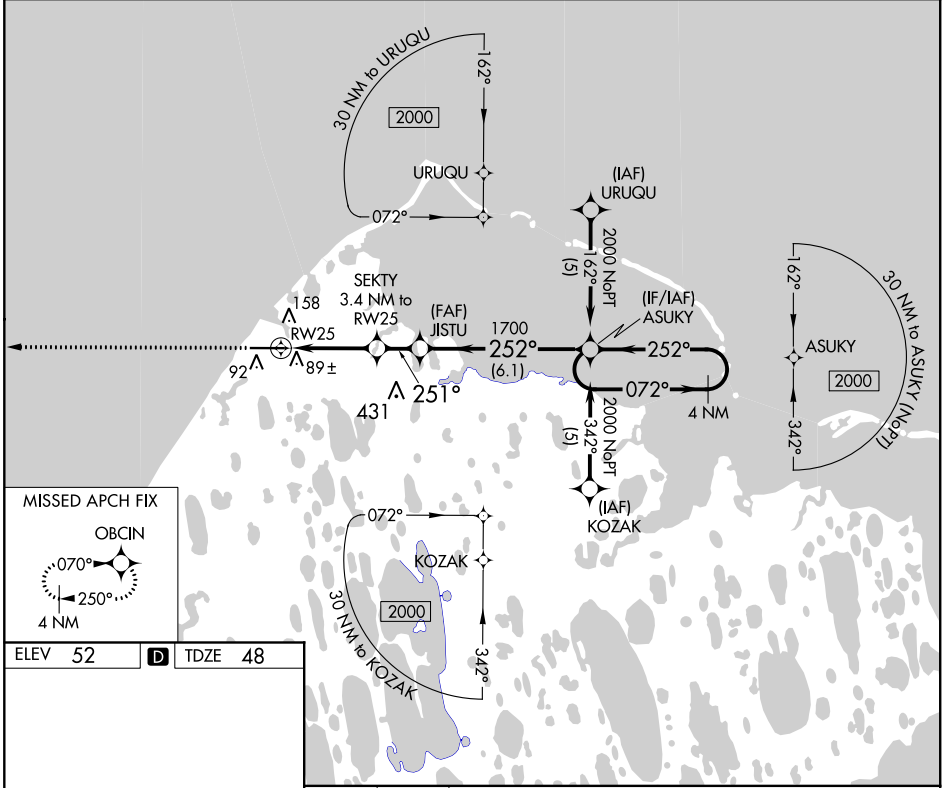
RNAV (GPS) RWY 25

WILEY POST-WILL ROGERS MEMORIAL (BRW)(PABR)

⚠ DME/DME RNP-0.3 NA. When local altimeter setting not received, use Atkasuk altimeter setting and increase all MDA 140 feet and LNAV and Circling Cat C and D visibility ½ mile. Circling NA for Cat A north of Rwy 7-25. VDP NA with Atkasuk altimeter setting.

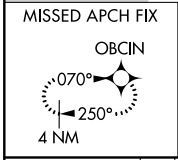
⚠ MISSED APPROACH: Climb to 2000 direct OBCIN and hold.

AFIS 132.15	ANCHORAGE CENTER 135.3 239.25	BARROW RADIO 123.6 (CTAF) 0
-----------------------	---	---------------------------------------

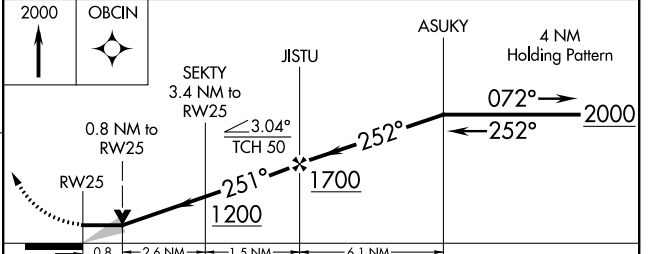
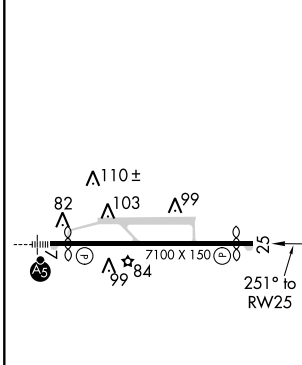


AK, 25 FEB 2021 to 22 APR 2021

AK, 25 FEB 2021 to 22 APR 2021



ELEV 52	D TDZE 48
---------	------------------



CATEGORY	A	B	C	D
LNAV MDA	360/50 312 (400-1)			
CIRCLING	420-1 368 (400-1)	520-1 468 (500-1)	520-1½ 468 (500-1½)	620-2 568 (600-2)

REIL Rwy 25 **0**
HIRL Rwy 7-25 **0**

RNAV (GPS) RWY 25