

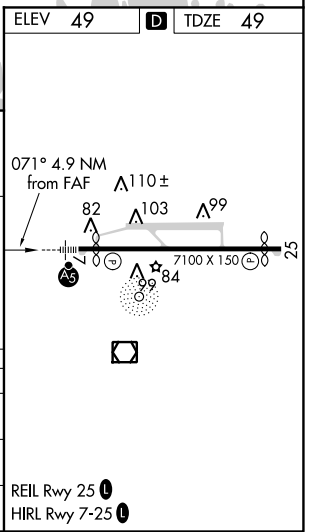
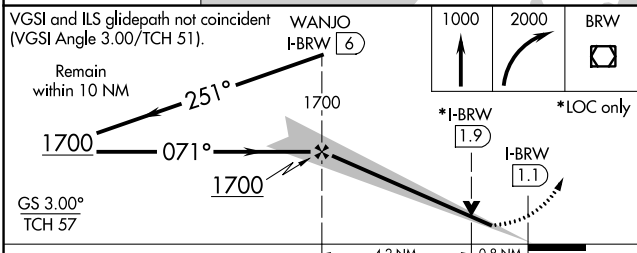
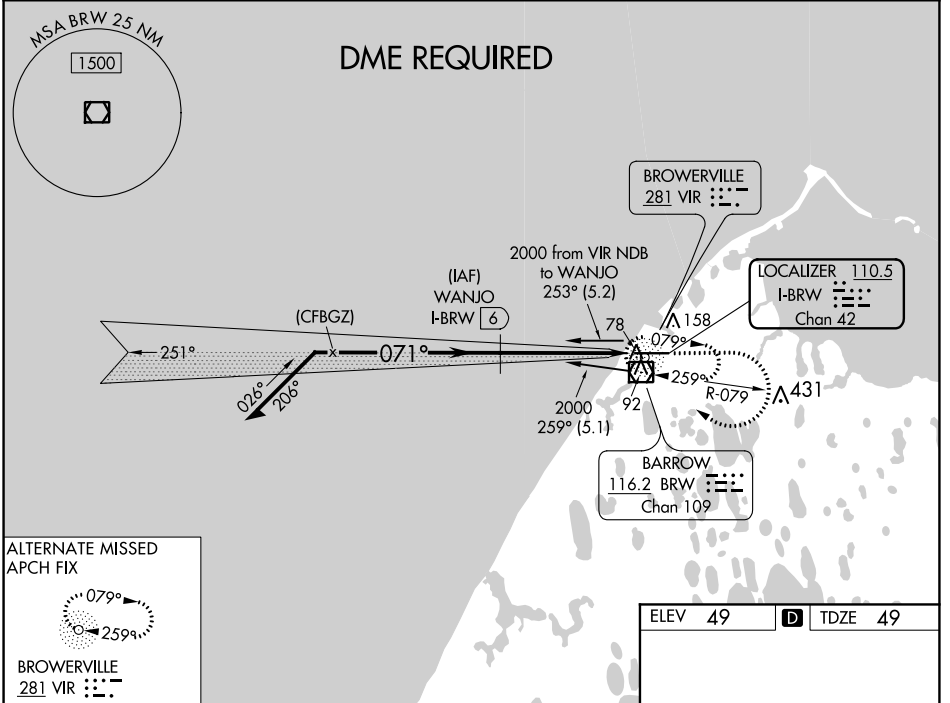
LOC/DME I-BRW 110.5 Chan 42	APP CRS 071°	Rwy Idg 5900 TDZE 49 Apt Elev 49
---	------------------------	---

ILS or LOC RWY 7

WILEY POST-WILL ROGERS MEMORIAL (BRW)(PABR)

<p>⚠ Circling NA for Cat A north of Rwy 7-25. Autopilot coupled approach NA below 290. DME required For inop ALS, increase S-LOC 7 Cat C/D visibility to RVR 4500. # RVR 1800 authorized with use of HUD to DA.</p>	<p>MALSR </p>	<p>MISSED APPROACH: Climb to 1000 then climbing right turn to 2000 direct BRW VOR/DME and hold, continue climb-in-hold to 2000.</p>
--	-------------------	---

AFIS 132.15	ANCHORAGE CENTER 135.3 239.25	BARROW RADIO 123.6 (CTAF) 0
-----------------------	---	---------------------------------------



CATEGORY	A	B	C	D
S-ILS 7#		249/26	200 (200-½)	
S-LOC 7		340/40	291 (300-¾)	
C CIRCLING	440-1 391 (400-1)	520-1 471 (500-1)	520-1½ 471 (500-1½)	680-2 631 (700-2)

AK, 25 FEB 2021 to 22 APR 2021

AK, 25 FEB 2021 to 22 APR 2021