

APP CRS	Rwy Idg	4440
146°	TDZE	721
	Apt Elev	742

RNAV (GPS) RWY 15

KENOSHA RGNL (ENW)

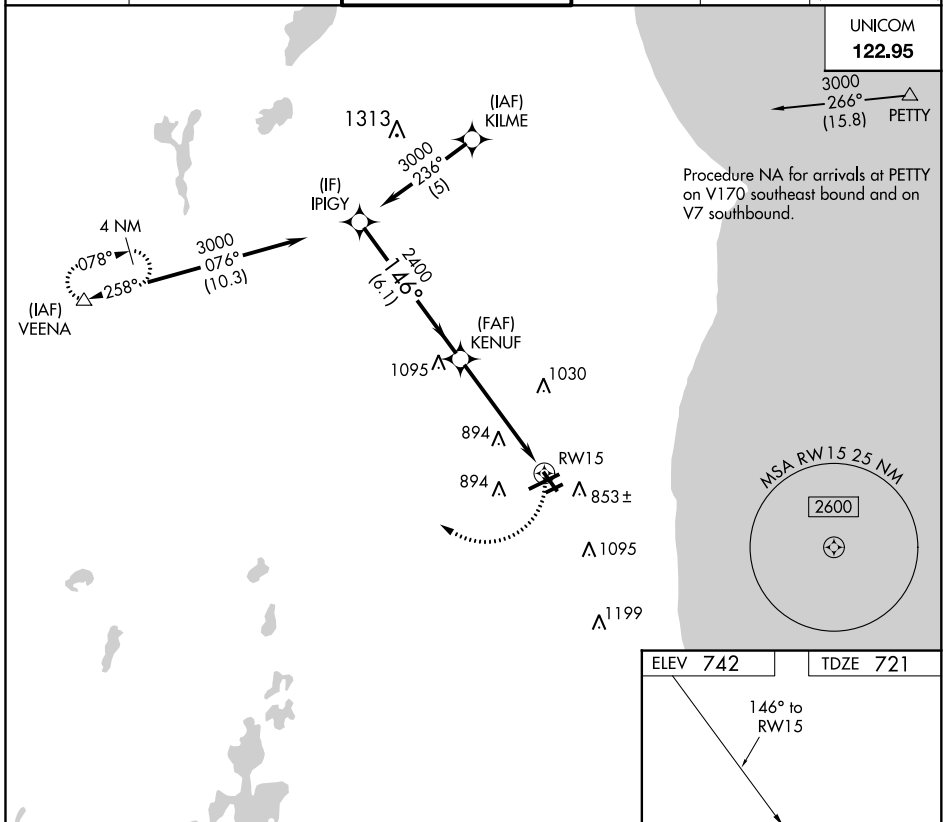
RNP APCH.

▼ Rwy 15 helicopter visibility reduction below 1 SM NA. Straight-In and Circling Rwy 15 NA at night, Circling Rwy 7R NA at night.

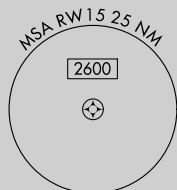
MISSED APPROACH:
Climbing right turn to 3000
direct VEENA and hold.

ATIS 127.175	MILWAUKEE APP CON 135.875 317.725	KENOSHA TOWER * 118.6 (CTAF) 0 353.6	GND CON 121.875	CLNC DEL 121.875	CLNC DEL 118.6 (When twr closed)
------------------------	---	--	---------------------------	----------------------------	---

UNICOM
122.95



Procedure NA for arrivals at PETTY on V170 southeast bound and on V7 southbound.



EC-3, 25 MAR 2021 to 22 APR 2021

EC-3, 25 MAR 2021 to 22 APR 2021

ELEV 742	TDZE 721
----------	----------

MIRL Rwy 7R-25L **1**
HIRL Rwys 7L-25R and 15-33 **1**
REIL Rwy 25R **1**

Visual Segment - Obstacles.				
IPIGY		KENUF		3000 VEENA
3000		2400		△
146°				
6.1 NM		5.1 NM		
CATEGORY	A	B	C	D
LNNAV MDA	1200-1	479 (500-1)	1200-1 $\frac{3}{8}$ 479 (500-1 $\frac{3}{8}$)	1200-1 $\frac{1}{2}$ 479 (500-1 $\frac{1}{2}$)
CIRCLING	1200-1	458 (500-1)	1200-1 $\frac{1}{2}$ 458 (500-1 $\frac{1}{2}$)	1340-2 598 (600-2)

RNAV (GPS) RWY 15