

VORTAC EUF <b>109.2</b> Chan 29	APP CRS <b>187°</b>	Rwy Idg <b>5000</b> TDZE <b>285</b> Apt Elev <b>285</b>
---------------------------------------	------------------------	---

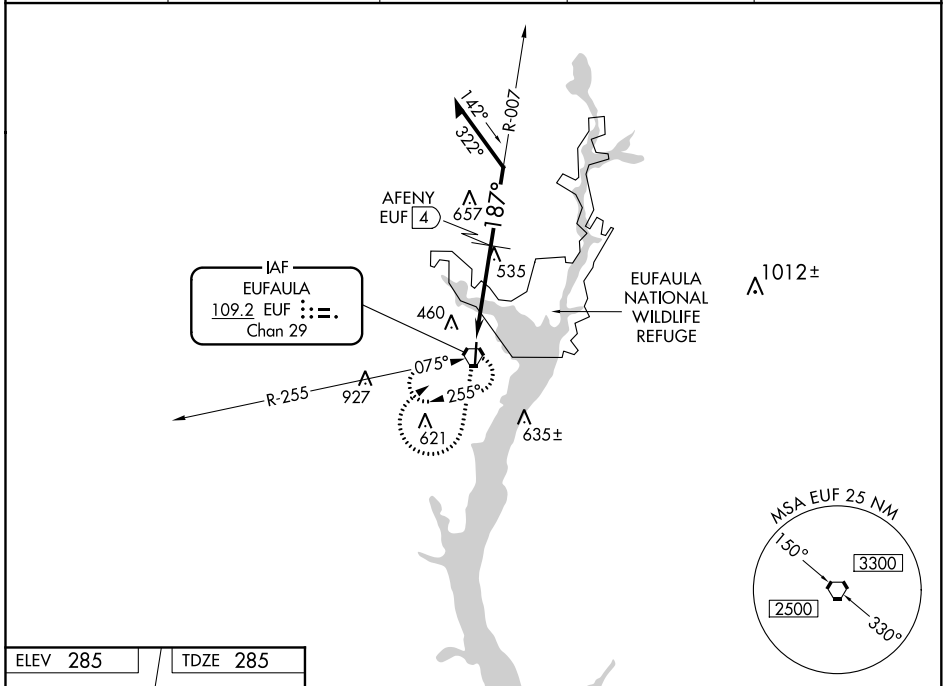
# VOR RWY 18

WEEDON FIELD (EUF)

**▲** Use Clayton altimeter setting; when not received, use Columbus, GA altimeter setting and increase all MDAs 40 feet and AFENY Fix Minimums Circling Cat C and D visibility ¼ mile.

**▲ NA** MISSED APPROACH: Climb to 1500 then climbing right turn to 2000 direct EUF VORTAC and hold.

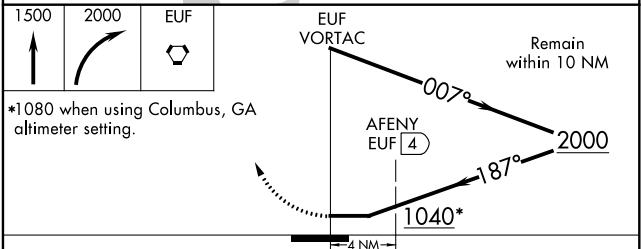
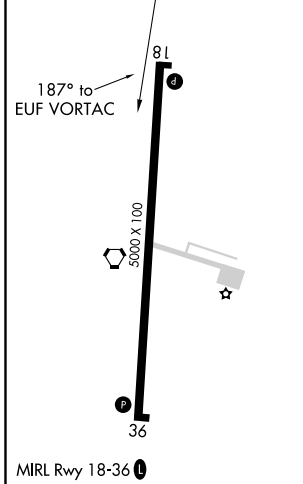
ASOS <b>128.325</b>	11A AWOS-3 <b>118.775</b>	ATLANTA APP CON ★ <b>125.5 323.1</b>	CLNC DEL <b>134.25 339.8</b>	UNICOM <b>122.8</b> (CTAF) <b>0</b>
------------------------	------------------------------	---	---------------------------------	--



SE-4, 25 MAR 2021 to 22 APR 2021

SE-4, 25 MAR 2021 to 22 APR 2021

ELEV 285	TDZE 285
----------	----------



CATEGORY	A	B	C	D
S-18	1040-1 755 (800-1)	1040-1¼ 755 (800-1¼)	1040-2¼ 755 (800-2¼)	1040-2½ 755 (800-2½)
CIRCLING	1040-1 755 (800-1)	1040-1¼ 755 (800-1¼)	1040-2¼ 755 (800-2¼)	1040-2½ 755 (800-2½)
AFENY FIX MINIMUMS (DME REQUIRED)				
S-18	900-1	615 (700-1)	900-1¾ 615 (700-1¾)	900-2 615 (700-2)
CIRCLING	920-1	635 (700-1)	920-1¾ 635 (700-1¾)	1000-2½ 715 (800-2½)