

WAAS CH <b>86723</b> <b>W18A</b>	APP CRS <b>188°</b>	Rwy Idg TDZE Apt Elev	<b>5000</b> <b>285</b> <b>285</b>
--	------------------------	-----------------------------	---

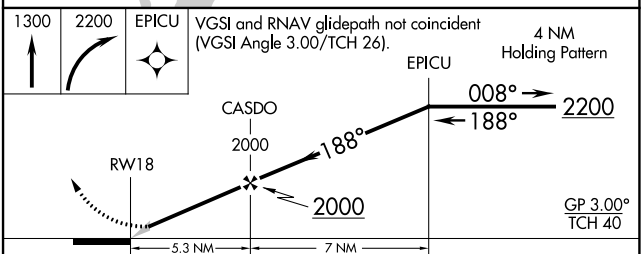
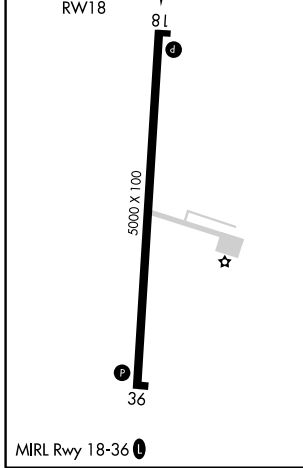
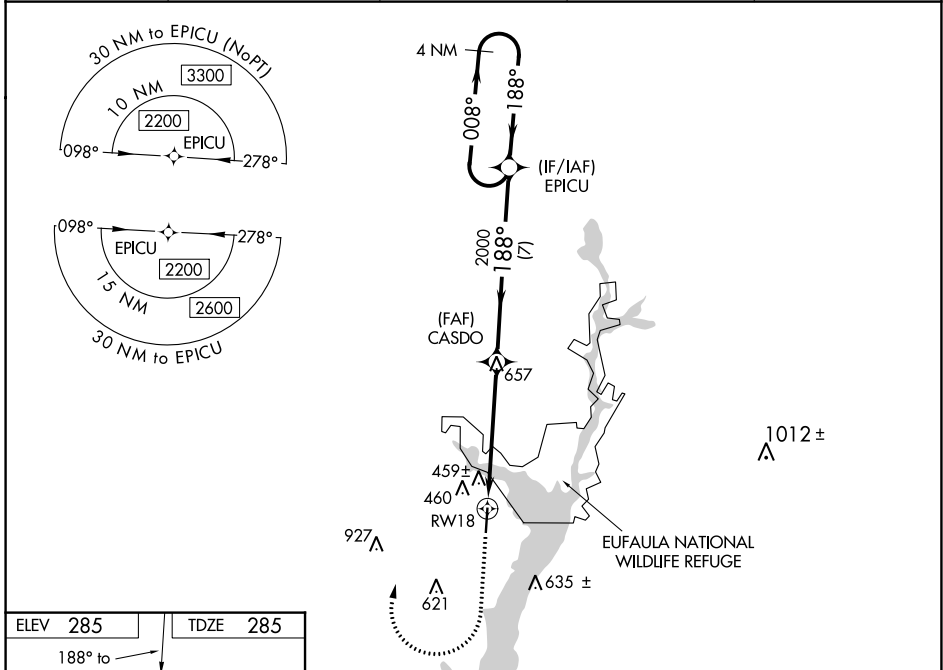
# RNAV (GPS) RWY 18

WEEDON FIELD (EUF)

**⚠** DME/DME RNP-0.3 NA. Baro-VNAV NA. Use Clayton altimeter setting; when not received, use Columbus, GA altimeter setting and increase all DA 33 feet and all MDA 40 feet; increase LPV all Cats and LNAV Cats C and D and Circling Cat C visibility 1/8 mile and Circling D visibility 1/4 mile.

**⚠** NA MISSED APPROACH: Climb to 1300 then climbing right turn to 2200 direct EPICU and hold.

ASOS <b>128.325</b>	11A AWOS-3 <b>118.775</b>	ATLANTA APP CON ★ <b>125.5 323.1</b>	CLNC DEL <b>134.25 339.8</b>	UNICOM <b>122.8</b> (CTAF) <b>📻</b>
------------------------	------------------------------	---	---------------------------------	--



CATEGORY	A	B	C	D
LPV DA	599-1 314 (400-1)			
LNAV/VNAV DA	706-1½ 421 (500-1½)			
LNAV MDA	940-1	655 (700-1)	940-1⅞	655 (700-1⅞)
CIRCLING	940-1	655 (700-1)	940-1⅞	1000-2¼ 655 (700-1⅞) 715 (800-2¼)

SE-4, 25 MAR 2021 to 22 APR 2021

SE-4, 25 MAR 2021 to 22 APR 2021