

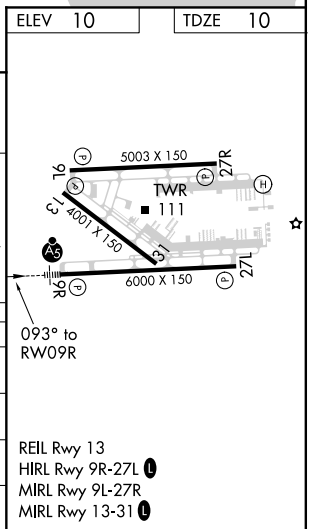
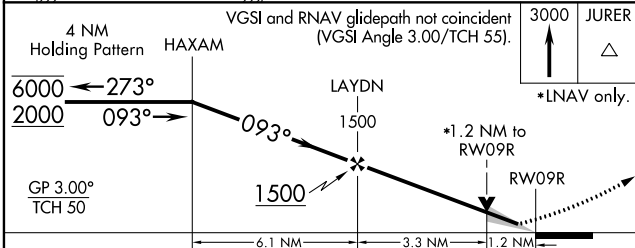
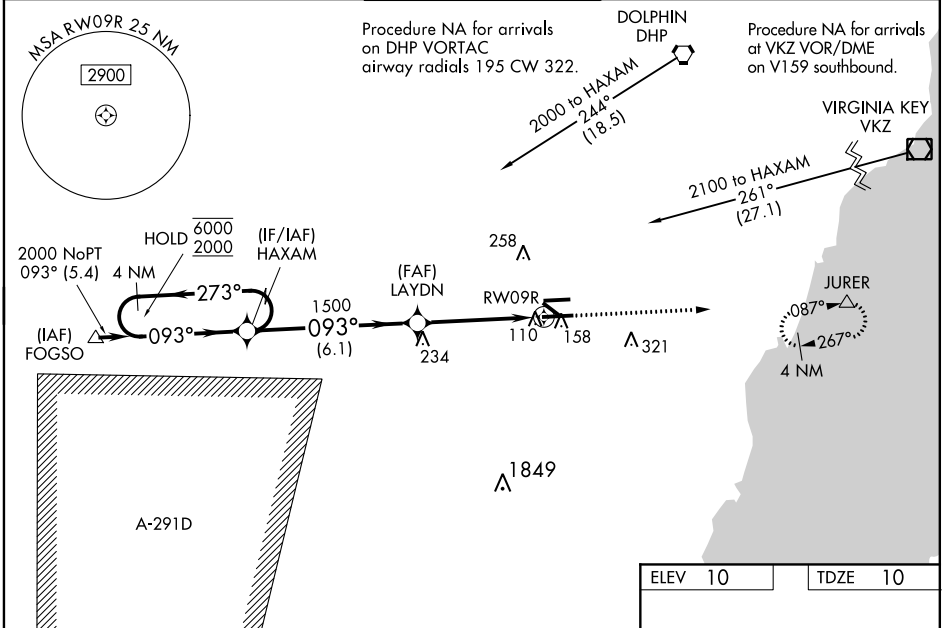
WAAS CH <b>72900</b> <b>W09A</b>	APP CRS <b>093°</b>	Rwy Idg TDZE Apt Elev	<b>6000</b> <b>10</b> <b>10</b>
--	------------------------	-----------------------------	---------------------------------------

# RNAV (GPS) RWY 9R

MIAMI EXECUTIVE (TMB)

RNP APCH.  ⚠ Circling Rwy 13, 31 NA at night. For uncompensated Baro-VNAV systems, LNAV/VNAV NA below -15°C or above 43°C. Baro-VNAV and VDP NA when using Miami Intl altimeter setting. When local altimeter setting not received, use Miami Intl altimeter setting and increase all DA by 27 feet and all MDA 40 feet, increase LNAV Cats C/D visibility 1/8 SM. For inop ALS when using Miami Intl altimeter setting, increase LNAV/VNAV all Cats visibility to 7/8 SM, and LNAV Cat C/D visibility to 1 1/8 SM.	MALSR 	MISSED APPROACH: Climb to 3000 direct JURER and hold, continue climb-in-hold to 3000.
---	-----------	--

ATIS <b>124.0</b>	MIAMI APP CON <b>125.5 354.1</b>	TAMIAMI TOWER ★ <b>118.9 (CTAF) 0</b>	GND CON <b>121.7</b>	CLNC DEL <b>133.0</b>
----------------------	-------------------------------------	--	-------------------------	--------------------------



CATEGORY	A	B	C	D
LPV DA		210-1/2	200 (200-1/2)	
LNAV/VNAV DA		302-1/2	292 (300-1/2)	
LNAV MDA	460-1/2	450 (500-1/2)	460-7/8	450 (500-7/8)
CIRCLING	460-1	450 (500-1)	460-1 1/2 450 (500-1 1/2)	640-2 630 (700-2)

SE-3, 25 MAR 2021 to 22 APR 2021

SE-3, 25 MAR 2021 to 22 APR 2021