

WAAS CH 82613	APP CRS 276°	Rwy Idg TDZE Apt Elev	5000 753 755
-------------------------	------------------------	-----------------------------	---

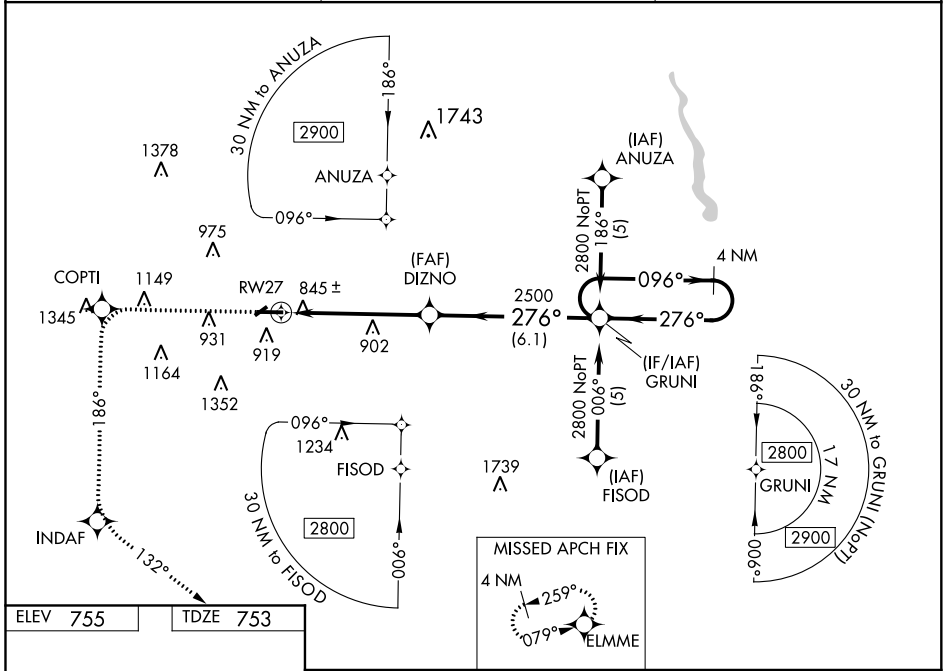
RNAV (GPS) RWY 27

MOUNT PLEASANT MUNI (MOP)

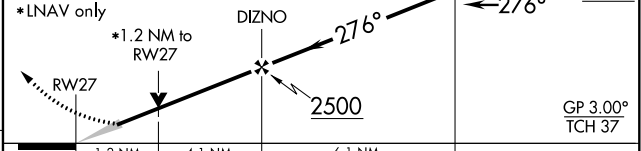
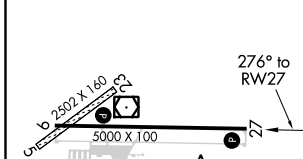
⚠ For uncompensated Baro-VNAV systems, LNAV/VNAV NA below -16°C (4°F) or above 47°C (116°F). DME/DME RNP-0.3 NA. When local altimeter setting not received, use Alma altimeter setting and increase all DA 42 feet and all MDA 60 feet, increase LPV, LNAV/VNAV all Cats, LNAV Cat D and Circling Cat C visibilities ¼ mile. Baro-VNAV and VDP NA when using Alma altimeter setting. Circling NA to Rwy's 5 and 23.

MISSED APPROACH: Climb to 3000 direct COPTI and via 186° track direct INDAF and via 132° track to ELMME and hold.

AWOS-3 133.025	GREAT LAKES APP CON * 126.45 235.625	UNICOM 123.0 (CTAF) 0
--------------------------	--	---------------------------------



ELEV 755	TDZE 753
-----------------	-----------------



CATEGORY	A	B	C	D
LPV DA	1099-1¼ 346 (400-1¼)			
LNAV/VNAV DA	1201-1½ 448 (500-1½)			
LNAV MDA	1160-1 407 (500-1)	1160-1¼ 407 (500-1¼)		
CIRCLING	1240-1 485 (500-1)	1320-1½ 565 (600-1½)	1360-2 605 (700-2)	

REIL Rwy's 9 and 27
MIRL Rwy 9-27

EC-1, 25 MAR 2021 to 22 APR 2021

EC-1, 25 MAR 2021 to 22 APR 2021