

LOC I-MTW	APP CRS	Rwy ldg	<b>5001</b>
<b>111.3</b>	<b>172°</b>	TDZE	<b>651</b>
		Apt Elev	<b>651</b>

# ILS or LOC RWY 17

MANITOWOC COUNTY (MTW)

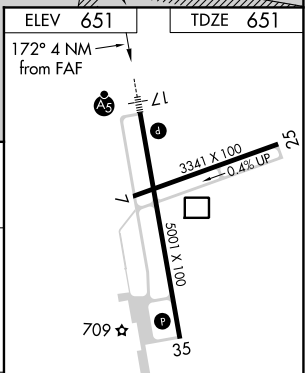
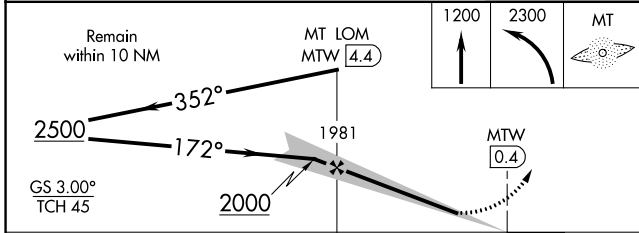
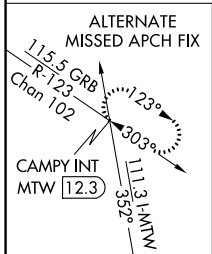
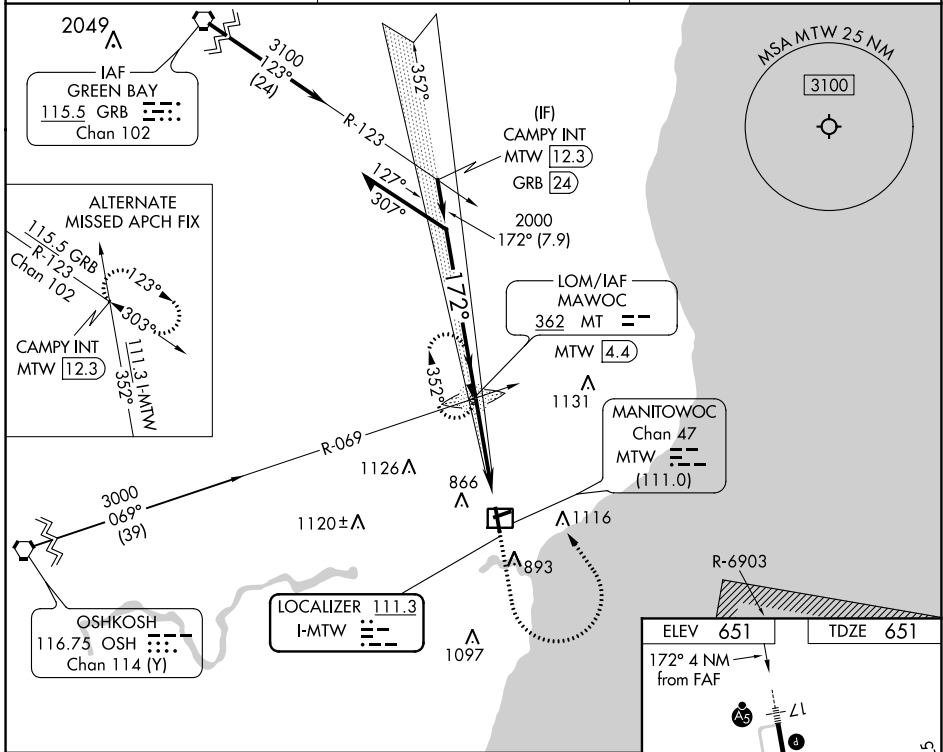
ADF required.

**MALSR**

MISSED APPROACH: Climb to 1200 then climbing left turn to 2300 direct MAWOC LOM and hold.

For inop ALS, increase S-LOC 17 Cat C/D visibility to 1 3/8 SM.

AWOS-3PT <b>123.775</b>	GREEN BAY APP CON* <b>120.2 338.2</b>	UNICOM <b>122.8 (CTAF)</b>
----------------------------	--	-------------------------------



CATEGORY	A	B	C	D
S-ILS 17	851-1/2 200 (200-1/2)			
S-LOC 17	1160-1/2	509 (600-1/2)	1160-1	509 (600-1)
CIRCLING	1200-1	549 (600-1)	1420-2 1/4 769 (800-2 1/4)	1480-2 3/4 829 (900-2 3/4)

REIL Rwy 35

MIRL Rwy 7-25

HIRL Rwy 17-35

FAF to MAP 4 NM

Knots	60	90	120	150	180
Min:Sec	4:00	2:40	2:00	1:36	1:20

EC-3, 25 MAR 2021 to 22 APR 2021

EC-3, 25 MAR 2021 to 22 APR 2021