

| | | |
|--|------------------------|---|
| WAAS CH 56206 W17A | APP CRS 175° | Rwy Idg 8006 TDZE 213 Apt Elev 214 |
|--|------------------------|---|

RNAV (GPS) RWY 17

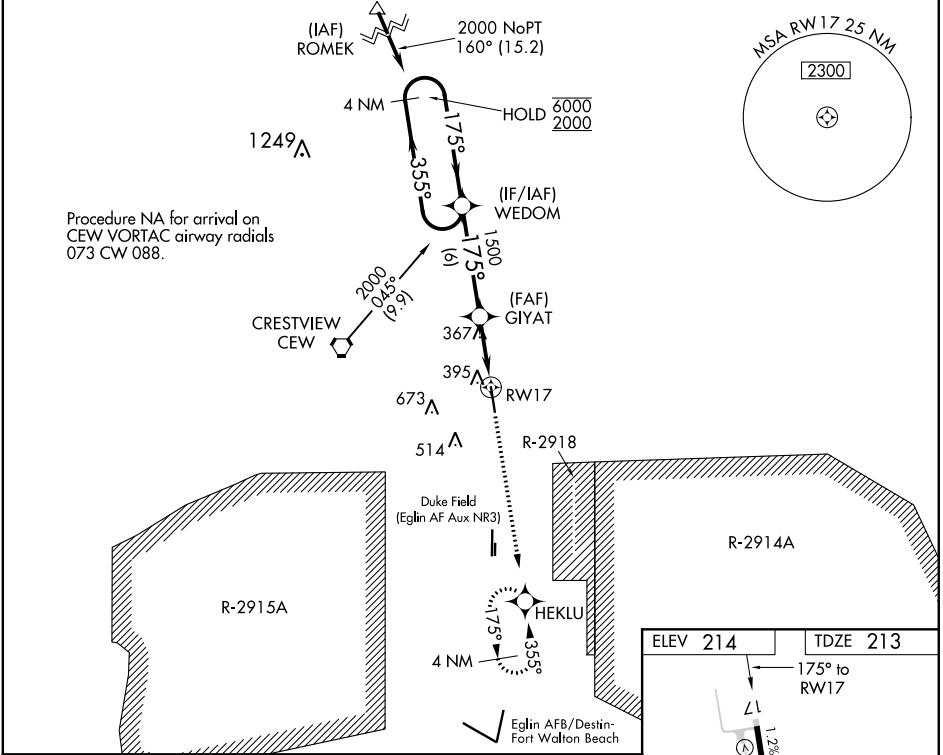
BOB SIKES (CEW)

RNP APCH.

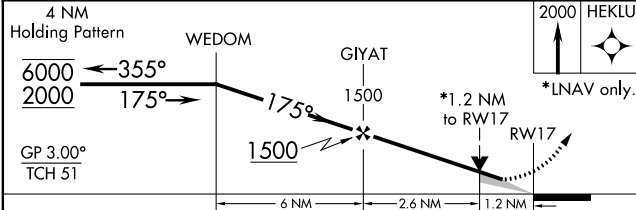
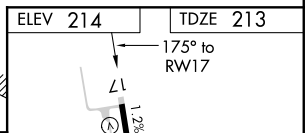
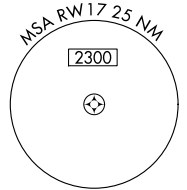
⚠ Circling NA for Cat D west of Rwy 17-35. Baro-VNAV and VDP NA when using EGLIN AFB altimeter setting. When local altimeter setting not received, use Egin AFB altimeter setting and increase LPV DA to 529, LNAV/VNAV DA to 699 and all MDA 60 feet. For uncompensated Baro-VNAV systems, LNAV/VNAV NA below -5°C or above 54°C.

MISSED APPROACH: Climb to 2000 direct HEKLU and hold.

| | | |
|------------------------|---------------------------------------|----------------------------------|
| ASOS 119.275 | EGLIN APP CON 124.05 284.65 | UNICOM 122.95 (CTAF) 0 |
|------------------------|---------------------------------------|----------------------------------|



Procedure NA for arrival on CEW VORTAC airway radials 073 CW 088.



| CATEGORY | A | B | C | D |
|-------------------|---------------------|---------------------|---------------------|---------------------|
| LPV DA | 470-1 257 (300-1) | | | |
| LNAV/VNAV DA | 640-1½ 427 (500-1½) | | | |
| LNAV MDA | 660-1 447 (500-1) | 660-1¼ 447 (500-1¼) | 660-1½ 447 (500-1½) | 660-1¾ 447 (500-1¾) |
| C CIRCLING | 700-1 486 (500-1) | 820-1¾ 606 (700-1¾) | 840-2 626 (700-2) | |

HIRL Rwy 17-35 0

SE-3, 25 MAR 2021 to 22 APR 2021

SE-3, 25 MAR 2021 to 22 APR 2021