


VORTAC OSH 116.75 Chan 114 (Y)	APP CRS 346°	Rwy Idg TDZE Apt Elev	5941 795 808
--	------------------------	-----------------------------	---

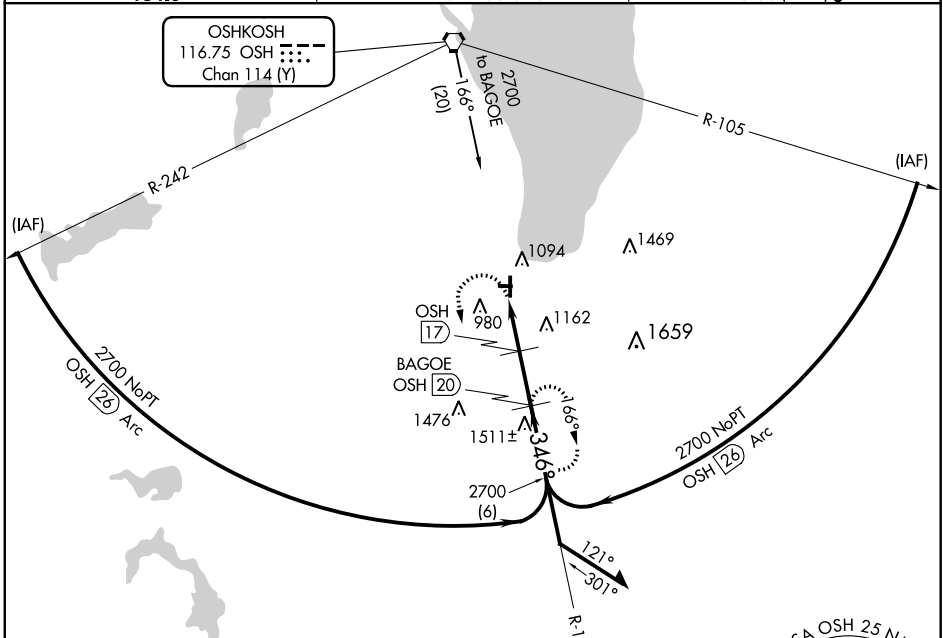
VOR/DME RWY 36

FOND DU LAC COUNTY (F.L.D)

⚠ Rwy 36 helicopter visibility reduction below 3/4 SM NA. Circling Rwy 9, 27 NA at night. For inop ALS when using Oshkosh altimeter setting, increase S-36 Cat A/B visibility to 1 SM, and Cat C/D to 1 1/2 SM. For inop ALS, increase S-36 Cat A/B visibility to 1 SM, Cat C/D to 1 1/2 SM. When local altimeter setting not received, use Oshkosh altimeter setting and increase all MDAs 40 feet and visibility S-36 Cat C 1/2 SM and Circling Cat C/D 1/2 SM.

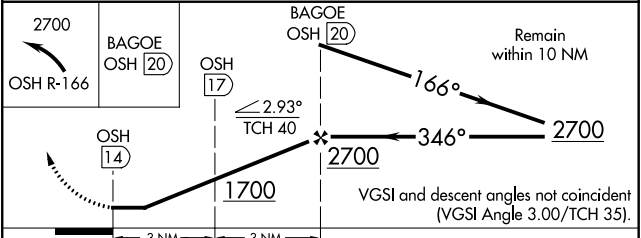
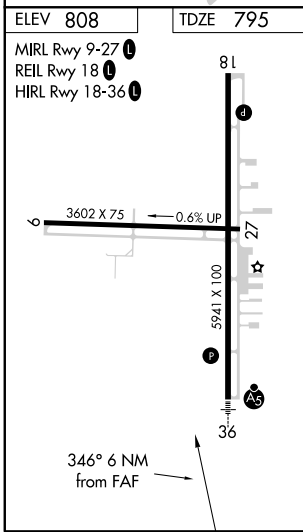
MALSR  **MISSED APPROACH:**
Climbing left turn to 2700 on OSH R-166 to BAGOE/20 DME and hold.

ASOS 134.0	MILWAUKEE APP CON 127.0 263.075	UNICOM 123.05 (CTAF) 0
----------------------	---	----------------------------------



EC-3, 25 MAR 2021 to 22 APR 2021

EC-3, 25 MAR 2021 to 22 APR 2021



CATEGORY	A	B	C	D
S-36	1420-3/4 625 (700-3/4)		1420-1 3/8 625 (700-1 3/8)	1420-1 1/2 625 (700-1 1/2)
C CIRCLING	1420-1 612 (700-1)		1520-2 712 (800-2)	1520-2 1/4 712 (800-2 1/4)