

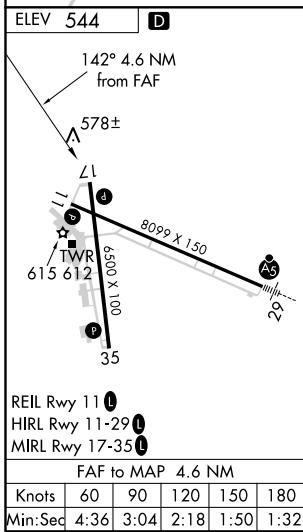
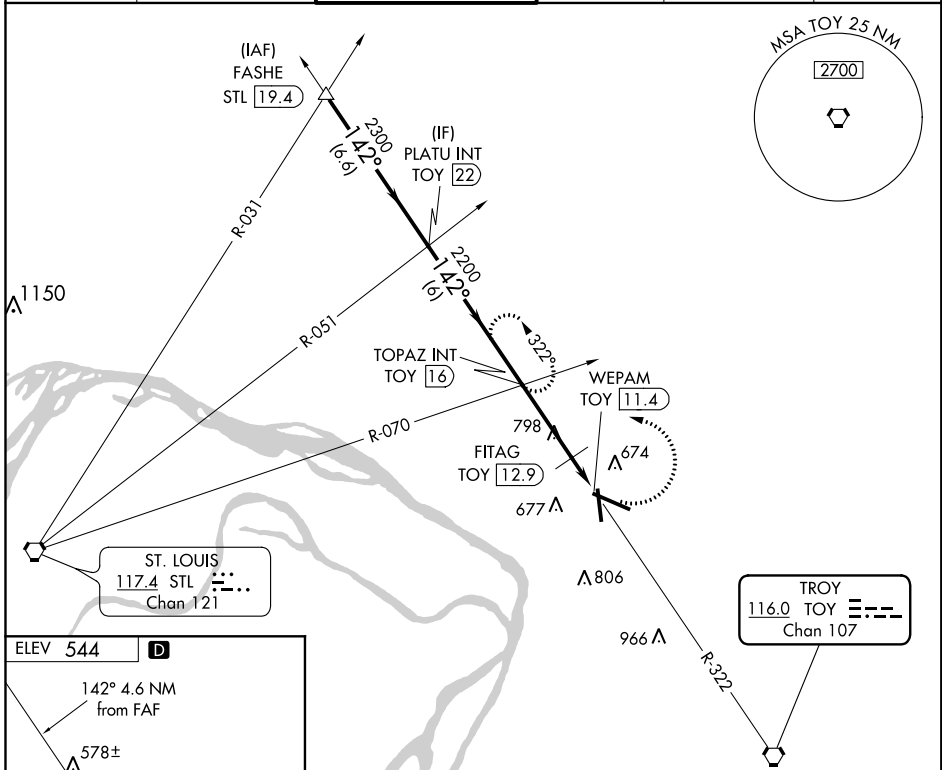
VORTAC TOY 116.0 Chan 107	APP CRS 142°	Rwy Idg TDZE Apt Elev 544	N/A N/A 544
---	------------------------	---	--

VOR-A
ST LOUIS RGNL (A.L.N)

⚠ When local altimeter setting not received, use St Louis Lambert Intl altimeter setting and increase all MDA 60 feet and increase Circling Cat C/D visibility ¼ SM. When VGSi inop, Circling to Rwy 17/35 NA at night.

MISSED APPROACH: Climbing left turn to 2200 via TOY R-322 to TOPAZ INT/TOY 16 DME and hold.

ATIS 128.0	ST LOUIS APP CON 124.2 353.9	REGIONAL TOWER* 126.0 (CTAF) 0 239.0	GND CON 120.2	CLNC DEL 120.2 (when tower closed)	UNICOM 122.95
----------------------	--	---	-------------------------	---	-------------------------



	FASHE STL 19.4 2700	*1160 when using St Louis Lambert Intl altimeter setting.	2200	TOPAZ INT
	142°	PLATU INT TOY 22	TOPAZ INT TOY 16	TOY R-322
	2300	FITAG TOY 12.9	WEPAM TOY 11.4	
Procedure Turn NA	6.6 NM	6 NM	*1100	1.4 NM
CATEGORY	A	B	C	D
CIRCLING	1100-1	556 (600-1)	1160-1¾ 616 (700-1¾)	1200-2 656 (700-2)
	FITAG FIX MINIMUMS			
CIRCLING	1000-1	456 (500-1)	1160-1¾ 616 (700-1¾)	1200-2 656 (700-2)

EC-3, 25 MAR 2021 to 22 APR 2021

EC-3, 25 MAR 2021 to 22 APR 2021