

# LINDBERGH SEVEN DEPARTURE

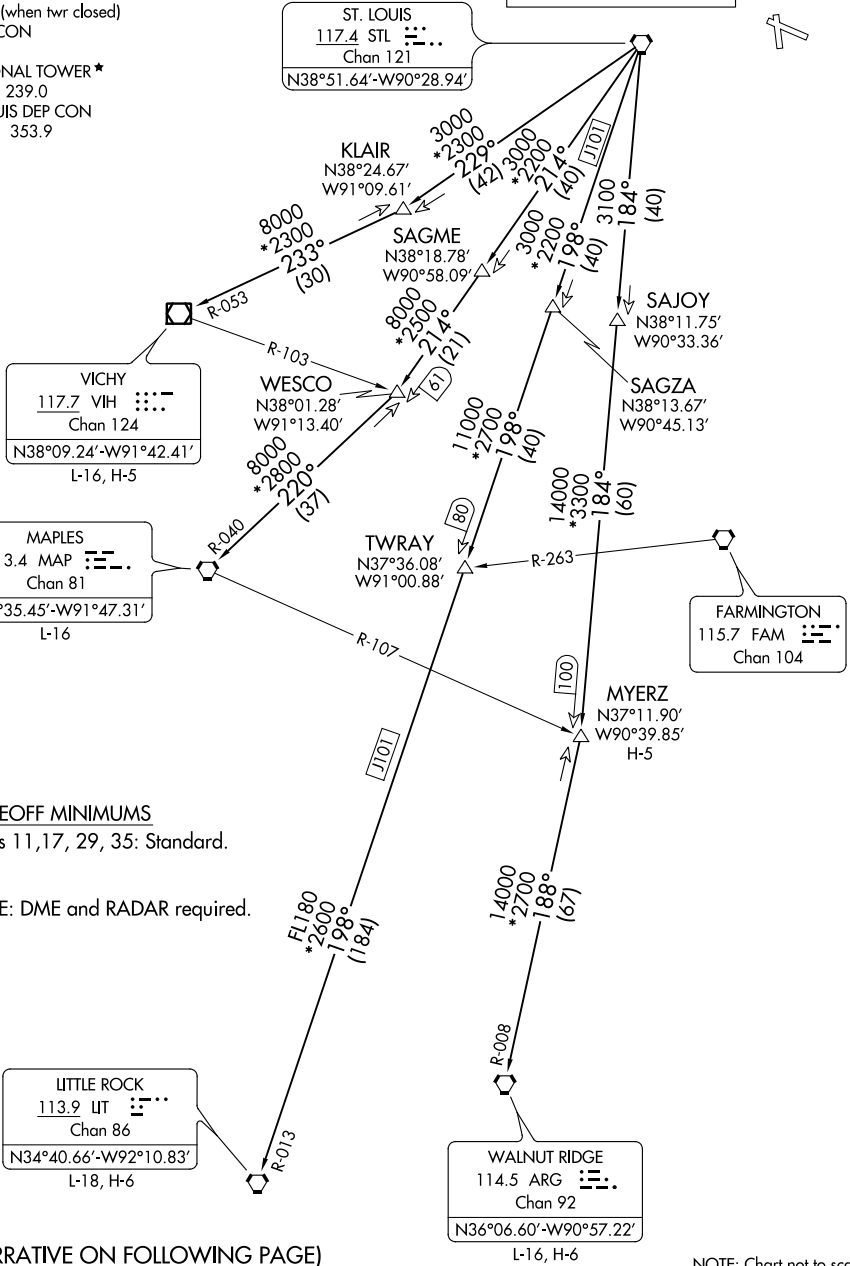
AL-5178 (FAA)

ST LOUIS RGNL (ALN)  
ALTON/ST. LOUIS, ILLINOIS

ATIS  
128.0  
CLNC DEL  
120.2 (when twr closed)  
GND CON  
120.2  
REGIONAL TOWER\*  
126.0 239.0  
ST LOUIS DEP CON  
124.2 353.9

**TOP ALTITUDE:  
2500**

ST. LOUIS  
117.4 STL  
Chan 121  
N38°51.64'-W90°28.94'



EC-3, 25 MAR 2021 to 22 APR 2021

EC-3, 25 MAR 2021 to 22 APR 2021

### TAKEOFF MINIMUMS

Rwys 11, 17, 29, 35: Standard.

NOTE: DME and RADAR required.

LITTLE ROCK  
113.9 LIT  
Chan 86  
N34°40.66'-W92°10.83'  
L-18, H-6

WALNUT RIDGE  
114.5 ARG  
Chan 92  
N36°06.60'-W90°57.22'  
L-16, H-6

(NARRATIVE ON FOLLOWING PAGE)

NOTE: Chart not to scale.

# LINDBERGH SEVEN DEPARTURE