

WAAS CH 99303 W20A	APP CRS 201°	Rwy Idg TDZE Apt Elev	8000 871 871
--	------------------------	-----------------------------	---

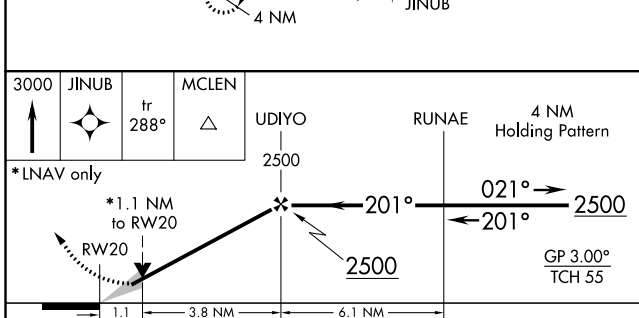
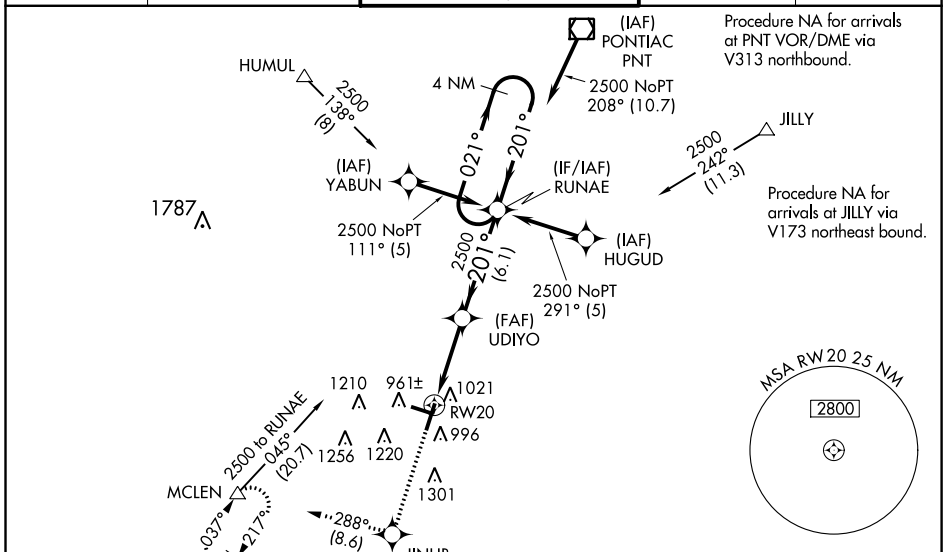
RNAV (GPS) RWY 20

CENTRAL IL RGNL ARPT AT BLOOMINGTON-NORMAL (BMI)

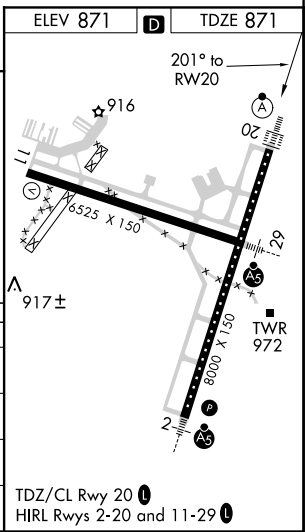
⚠ For uncompensated Baro-VNAV systems, LNAV/VNAV NA below -16°C (4°F) or above 54°C (130°F). DME/DME RNP-0.3 NA. Baro-VNAV and VDP NA when using General Downing-Peoria Intl altimeter setting. When local altimeter setting not received, use General Downing-Peoria Intl altimeter setting: increase all DA 116 feet and all MDA 120 feet; increase LPV all Cats visibility to 3/4 mile, LNAV/VNAV all Cats visibility to 1 3/8 mile, LNAV Cats C/D visibility to 1 mile, and Circling Cats C/D visibility 1/2 mile. For inop ALSF increase LNAV Cat C/D visibility to RVR 6000. For inoperative ALSF-2 when using General Downing-Peoria Intl altimeter setting increase LPV all Cats visibility to RVR 6000.

ALSF-2
(A)
MISSED APPROACH:
Climb to 3000 direct JINUB and on track 288° to MCLEN and hold.

ATIS 135.35	PEORIA APP CON 128.725 256.9	BLOOMINGTON TOWER * 124.6 (CTAF) 0 269.575	GND CON 121.65	UNICOM 122.95
-----------------------	--	---	--------------------------	-------------------------



CATEGORY	A	B	C	D
LPV DA		1121/24	250 (300-1/2)	
LNAV/VNAV DA		1301/50	430 (500-1)	
LNAV MDA	1280/24	409 (500-1/2)	1280/40	409 (500-3/4)
C CIRCLING	1340-1	469 (500-1)	1620-2 1/4 749 (800-2 1/4)	1620-2 1/2 749 (800-2 1/2)



RNAV (GPS) RWY 20

EC-3, 25 MAR 2021 to 22 APR 2021

EC-3, 25 MAR 2021 to 22 APR 2021