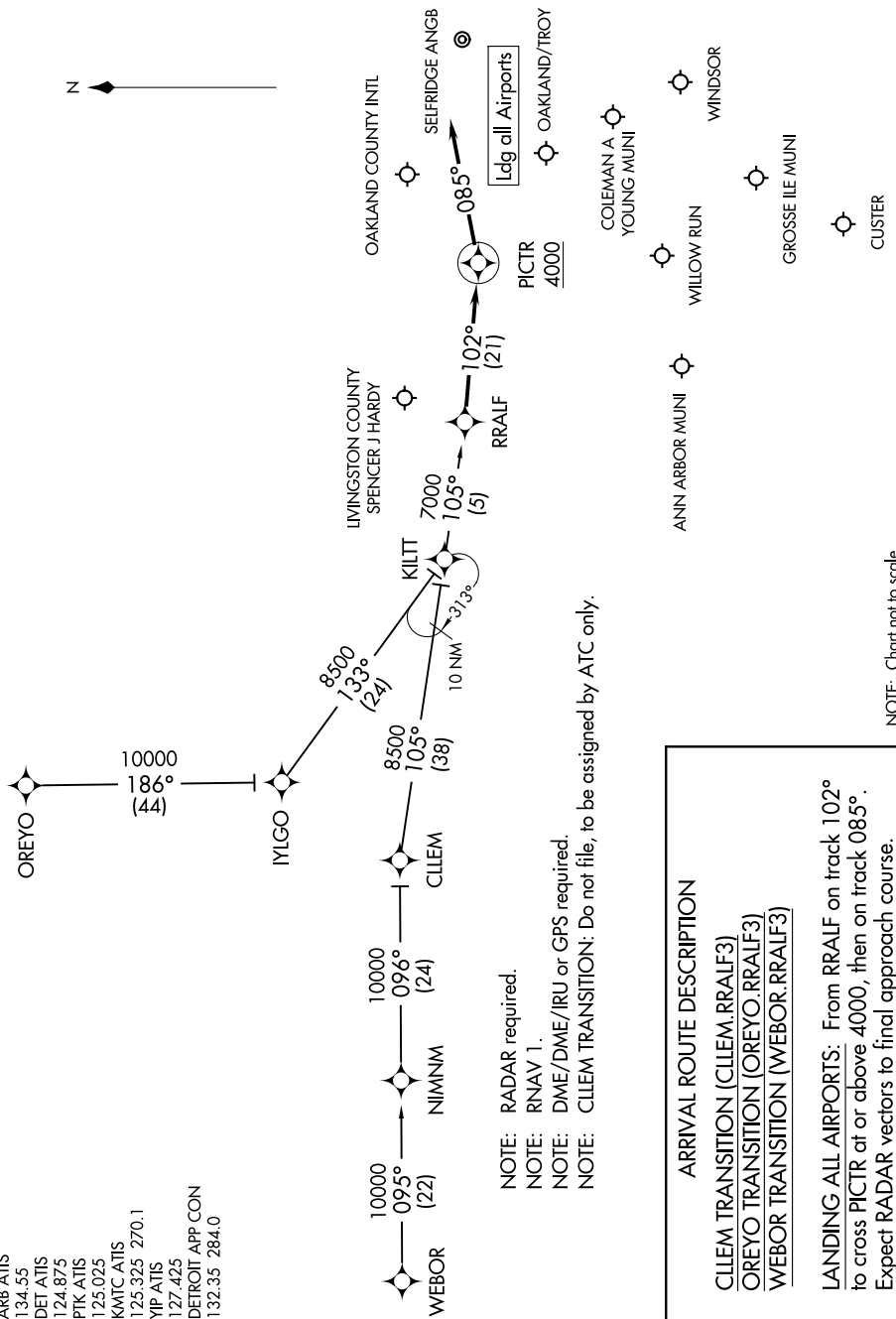


EC-1, 25 MAR 2021 to 22 APR 2021

ARB ATIS 134.55
 DET ATIS 124.875
 PKT ATIS 125.025
 KMTC ATIS 125.325 270.1
 YIP ATIS 127.425
 DETROIT APP CON 132.35 284.0



NOTE: RADAR required.
 NOTE: RNAV 1.
 NOTE: DME/DME/IRU or GPS required.
 NOTE: CLEEM TRANSITION: Do not file, to be assigned by ATC only.

ARRIVAL ROUTE DESCRIPTION
 CLEEM TRANSITION (CLEEM.RRALF3)
 OREYO TRANSITION (OREYO.RRALF3)
 WEBOR TRANSITION (WEBOR.RRALF3)

LANDING ALL AIRPORTS: From RRALF on track 102° to cross PICTR at or above 4000, then on track 085°. Expect RADAR vectors to final approach course.

NOTE: Chart not to scale.

EC-1, 25 MAR 2021 to 22 APR 2021