

|  |                        |  |
|--|------------------------|--|
| WAAS<br>CH <b>99413</b><br><b>W18A</b> | APP CRS<br><b>179°</b> | Rwy Idg <b>6508</b><br>TDZE <b>9</b><br>Apt Elev <b>10</b> |
|--|------------------------|--|

# RNAV (GPS) RWY 18

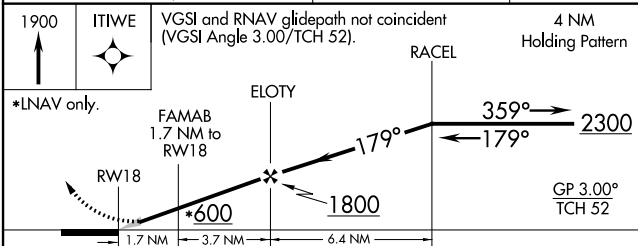
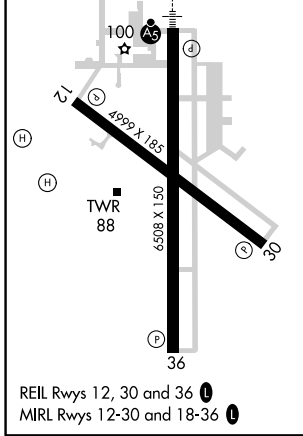
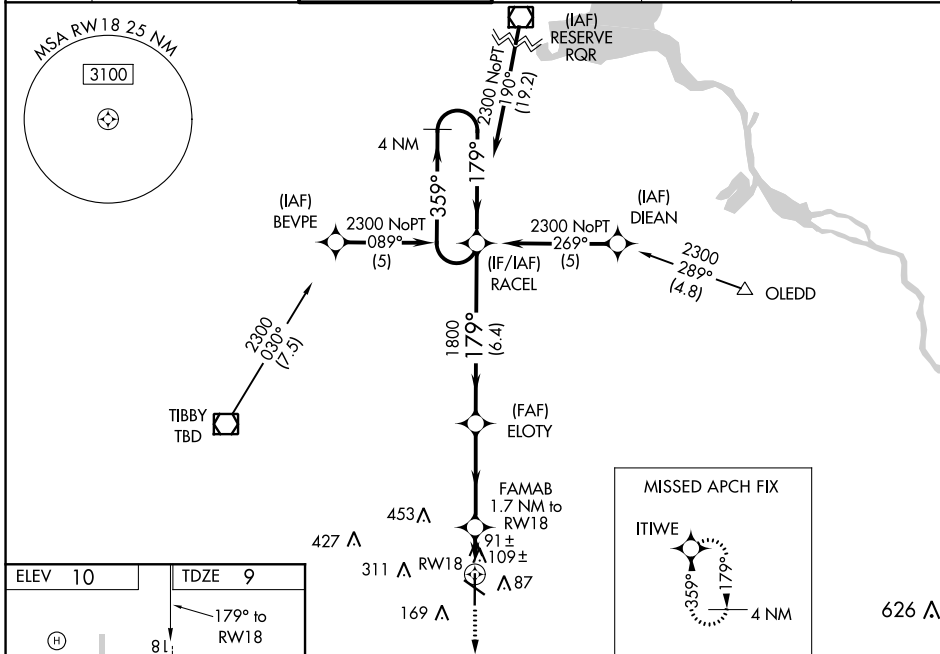
HOUMA-TERREBONNE (HUM)

**⚠** Baro-VNAV NA when using Louis Armstrong New Orleans Intl altimeter setting. For uncompensated Baro-VNAV systems, LNAV/VNAV NA below -15°C (5°F) or above 49°C (120°F). DME/DME RNP-0.3 NA. When local altimeter setting not received, use Louis Armstrong New Orleans Intl altimeter setting and increase all DA 77 feet and LNAV/VNAV all Cats visibility ¼ mile, increase all MDA 80 feet, LNAV Cat C visibility ¼ mile and Circling Cat D visibility ¼ mile. For inoperative MALSRS when using Louis Armstrong New Orleans Intl altimeter setting increase LPV all Cats visibility to 1 mile.



MISSED APPROACH: Climb to 1900 direct ITIWE and hold.

|                       |  |  |                           |   |                         |
|-----------------------|--|--|---------------------------|---|-------------------------|
| ATIS<br><b>120.25</b> | NEW ORLEANS APP CON<br><b>118.9 350.35</b> | HOUMA TOWER ★<br><b>125.3 (CTAF) 346.3</b> | GND CON<br><b>123.875</b> | CLNC DEL<br><b>118.9</b><br>(When twr closed) | UNICOM<br><b>122.95</b> |
|-----------------------|--|--|---------------------------|---|-------------------------|



| CATEGORY     | A     | B                 | C                      | D                    |
|--------------|-------|-------------------|------------------------|----------------------|
| LPV DA       |       | 209-½             | 200 (200-½)            |                      |
| LNAV/VNAV DA |       | 450-1 441 (500-1) |                        |                      |
| LNAV MDA     | 440-½ | 431 (500-½)       | 440-¾<br>431 (500-¾)   | 440-1<br>431 (500-1) |
| CIRCLING     | 480-1 | 470 (500-1)       | 480-1½<br>470 (500-1½) | 620-2<br>610 (700-2) |

SC-4, 25 MAR 2021 to 22 APR 2021

SC-4, 25 MAR 2021 to 22 APR 2021