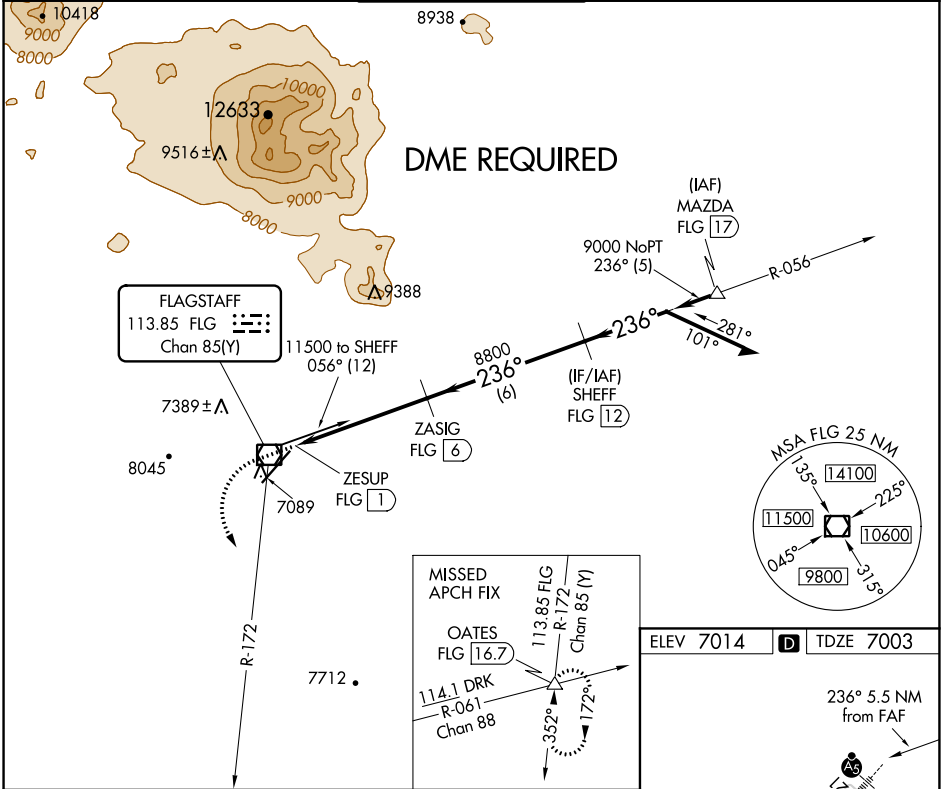


VOR/DME FLG <b>113.85</b> Chan <b>85(Y)</b>	APP CRS <b>236°</b>	Rwy Idg <b>7000</b> TDZE <b>7003</b> Apt Elev <b>7014</b>
---	------------------------	---

# VOR RWY 21

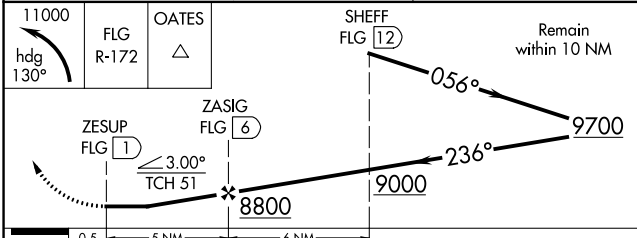
FLAGSTAFF PULLIAM (FLG)

Rwy 21 helicopter visibility reduction below 1 SM NA. DME required. Inop table does not apply to S-21 Cats A/B. Night landing: Rwy 21, operational VGSI required, remain on or above VGSI glidepath until threshold.	MALSR	MISSED APPROACH: Climbing left turn to 11000 on heading 130° and FLG R-172 to OATES INT/16.7 DME, continue climb-in-hold.		
		ATIS <b>125.8</b>	PHOENIX APP CON <b>126.375 236.775</b>	FLAGSTAFF TOWER ★ <b>134.55 (CTAF) 239.25</b>



SW-4, 25 MAR 2021 to 22 APR 2021

SW-4, 25 MAR 2021 to 22 APR 2021



CATEGORY	A	B	C	D
S-21	7520-1 517 (600-1)			
CIRCLING	7520-1 506 (600-1)	7560-1 546 (600-1)	8100-3 1086 (1100-3)	8560-3 1546 (1600-3)

HIRL Rwy 3-21