

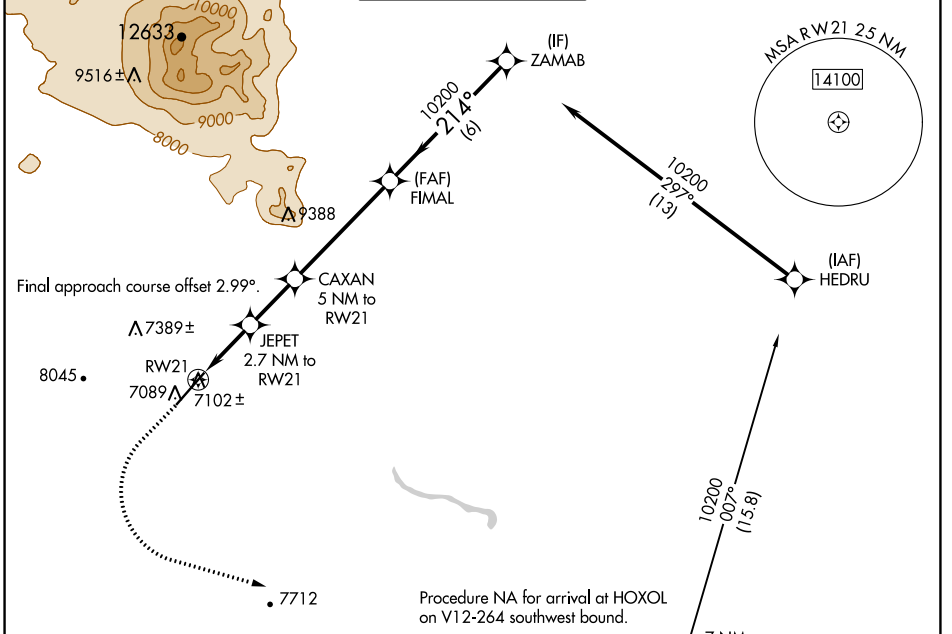
WAAS CH 99341 W21A	APP CRS 214°	Rwy Idg TDZE 7000 Apt Elev 7014
--	------------------------	---

RNAV (GPS) RWY 21

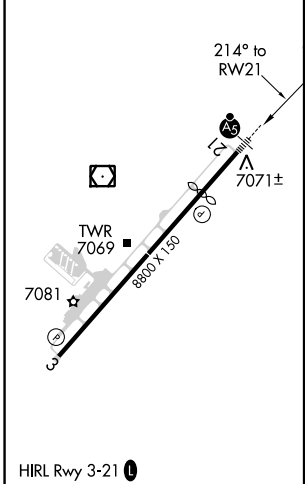
FLAGSTAFF PULLIAM (F.L.G)

<p>⚠ For uncompensated Baro-VNAV systems, LNAV/VNAV NA below -19 °C (2°F) or above 44°C (111°F). DME/DME RNP-0.3 NA. For inop ALS, increase LPV all Cats visibility to ¾ SM.</p>	<p>MALSR</p>	<p>MISSED APPROACH: Climb to 7500 then climbing left turn to 10800 direct HOXOL and hold.</p>
---	--------------	---

ATIS 125.8	PHOENIX APP CON 126.375 236.775	FLAGSTAFF TOWER ★ 134.55 (CTAF) 239.25	GND CON 121.9	UNICOM 122.95
----------------------	---	--	-------------------------	-------------------------



ELEV 7014	D	TDZE 7003
-----------	----------	-----------



	7500	10800	HOXOL		FIMAL	ZAMAB
	↑	↩	△		10200	10200
	*LNAV only		JEPET 2.7 NM to RWY21	CAXAN 5 NM to RWY21		
		*1 NM to RWY21			214°	10200
				8640*	10200	GP 3.00° TCH 52
CATEGORY		A	B	C	D	
LPV DA		7258-½		255 (300-½)		
LNAV/VNAV DA		7319-5/8		316 (400-5/8)		
LNAV MDA		7360-½		7360-5/8		357 (400-5/8)
C CIRCLING	7520-1 506 (600-1)	7560-1 546 (600-1)	8100-3 1086 (1100-3)	8560-3 1546 (1600-3)		

SW-4, 25 MAR 2021 to 22 APR 2021

SW-4, 25 MAR 2021 to 22 APR 2021