

LOC I-FLG 110.5	APP CRS 214°	Rwy Idg TDZE Apt Elev	7000 7003 7014
---------------------------	------------------------	-----------------------------	---

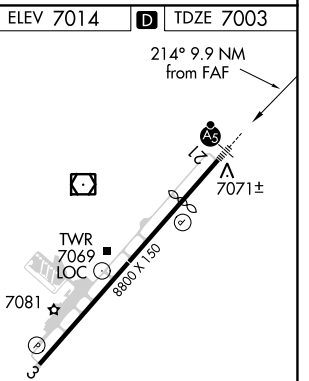
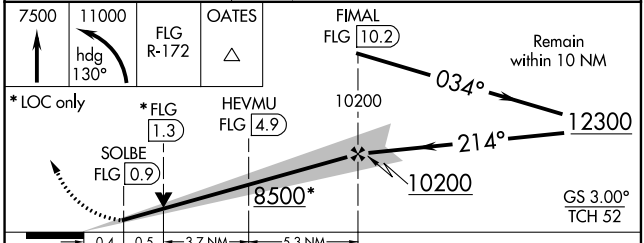
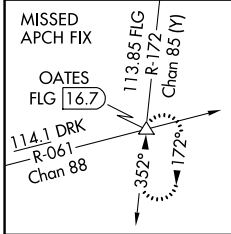
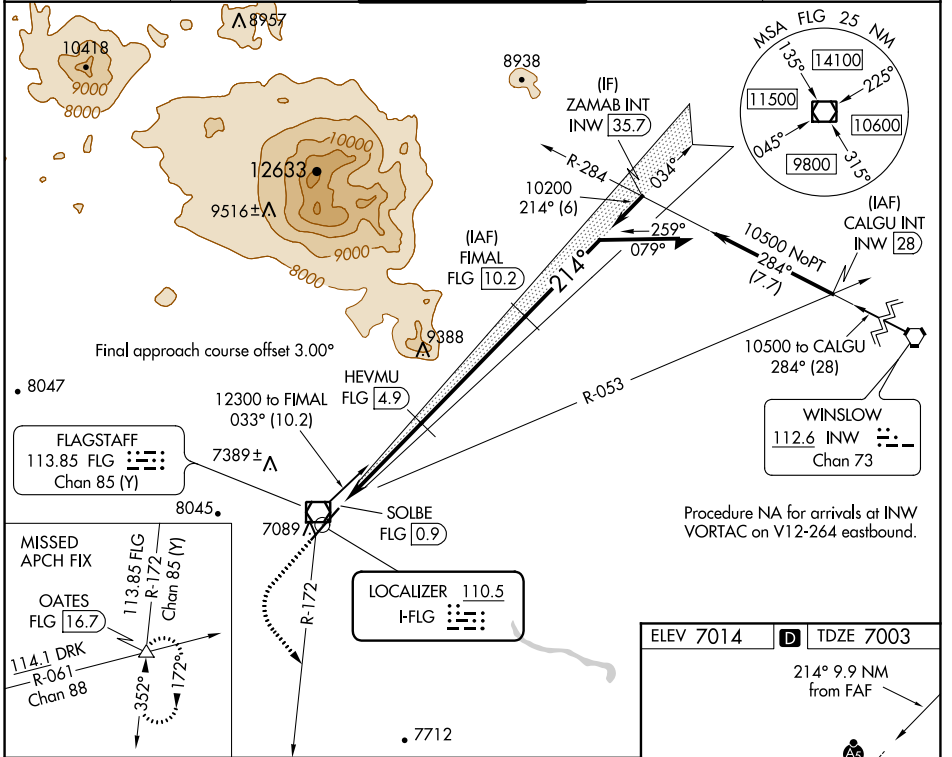
ILS or LOC RWY 21

FLAGSTAFF PULLIAM (FLG)

Autopilot coupled approach NA below 7640 feet. DME required. DME from FLG VOR/DME. Simultaneous reception of I-FLG and FLG DME required. For inop ALS increase S-ILS 21 all Cats visibility to ½.

MALSR MISSED APPROACH: Climb to 7500, then climbing left turn to 11000 on heading 130° and FLG R-172 to OATES INT/FLG VOR/DME 16.7 DME and hold, continue climb-in-hold to 11000.

ATIS 125.8	PHOENIX APP CON 126.375 236.775	FLAGSTAFF TOWER ★ 134.55 (CTAF) 239.25	GND CON 121.9	UNICOM 122.95
----------------------	---	--	-------------------------	-------------------------



CATEGORY	A	B	C	D
S-ILS 21		7258-½	255 (300-½)	
S-LOC 21		7340-½	337 (400-½)	
CIRCLING	7520-1 506 (600-1)	7560-1 546 (600-1)	8100-3 1086 (1100-3)	8560-3 1546 (1600-3)

HIRL Rwy 3-21

SW-4, 25 MAR 2021 to 22 APR 2021

SW-4, 25 MAR 2021 to 22 APR 2021