

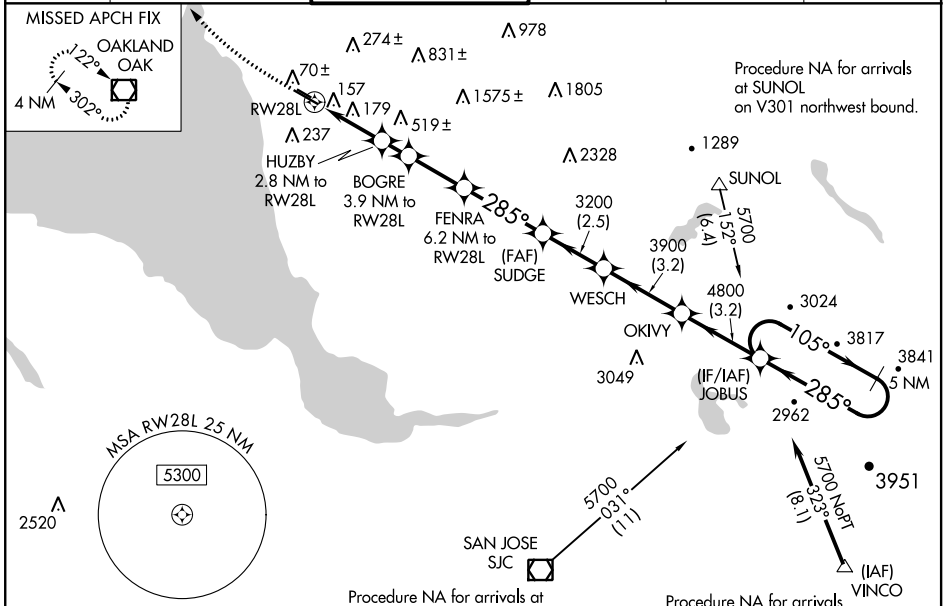
WAAS CH 40330 W28A	APP CRS 285°	Rwy Idg 5018 TDZE 50 Apr Elev 52
--	------------------------	---

RNAV (GPS) RWY 28L

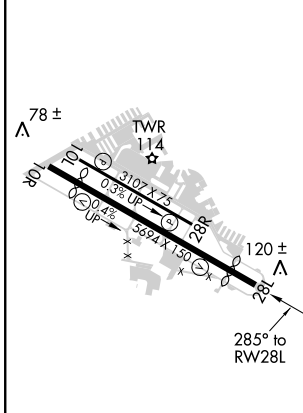
HAYWARD EXECUTIVE (HWD)

RNP APCH.	Baro-VNAV NA. When local altimeter setting not received, use Oakland altimeter setting and increase all DA and MDA 20 feet, and increase all LNAV/VNAV and LNAV Cats C and D visibility 1/8 mile. Circling NA north of Rwy 10L-28R. Rwy 28L: Helicopter visibility reduction below 3/4 SM NA.	MISSED APPROACH: Climb to 600 then climbing right turn to 2100 direct OAK VOR/DME and hold.
-----------	---	---

ATIS 126.7	NORCAL APP CON 124.4 351.8	HAYWARD TOWER ★ 120.2 (CTAF) 0 257.8	GND CON 121.4	CLNC DEL 128.05	UNICOM 122.95
----------------------	--------------------------------------	--	-------------------------	---------------------------	-------------------------



ELEV 52	TDZE 50
---------	---------



600	2100	OAK	VGSI and RNAV glidepath not coincident (VGSI Angle 4.00/TCH 35).				
*LNAV only.		FENRA	SUDGE	WESCH	OKIVY	JOBUS	5 NM Holding Pattern
		6.2 NM to RWY28L					
		BOGRE					
		3.9 NM to RWY28L					
		HUZBY					
		2.8 NM to RWY28L					
		RWY28L					
		1000*	1360*	2120*	3200		
		2.8	1.1 NM	2.3 NM	3.3 NM	2.5 NM	3.2 NM
		3.2 NM	3.2 NM				
GP 3.10°							TCH 35
CATEGORY	A	B	C	D			
LPV DA		348-1	298 (300-1)				
LNAV/VNAV DA		400-1½	350 (400-1½)				
LNAV MDA	460-1	410 (500-1)	460-1½	410 (500-1½)			
CIRCLING	540-1	488 (500-1)	540-1½	620-2	488 (500-1½)	568 (600-2)	

MIRL Rwy 10R-28L
MIRL Rwy 10L-28R
REIL Rwy 10R and 28L

SW-2, 25 MAR 2021 to 22 APR 2021

SW-2, 25 MAR 2021 to 22 APR 2021