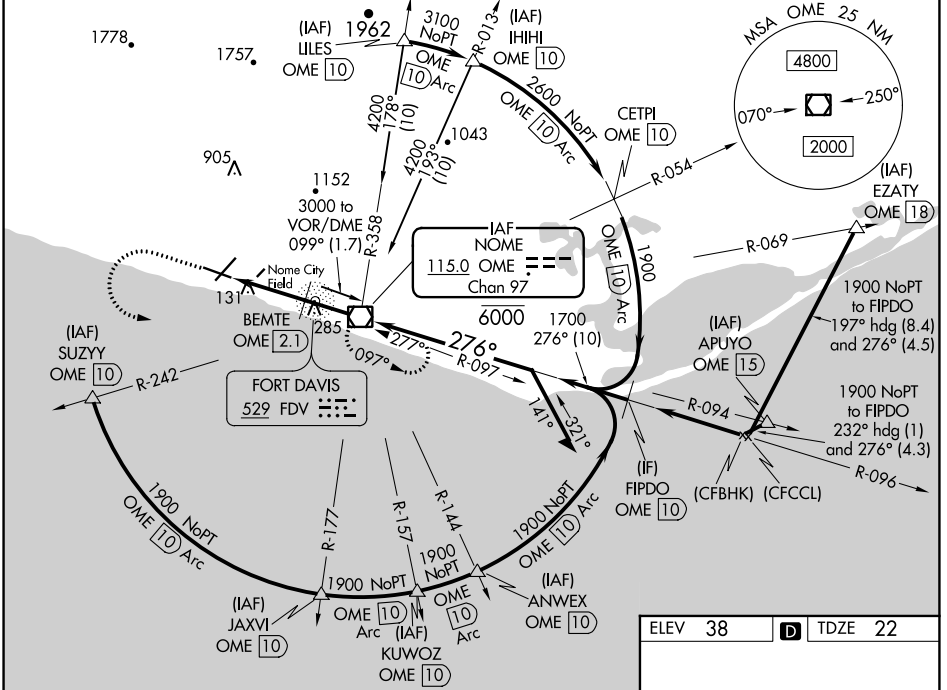


VOR/DME OME 115.0 Chan 97	APP CRS 276°	Rwy Idg 6009 TDZE 22 Apt Elev 38
---	------------------------	---

VOR RWY 28

NOME (OME)(PAOM)

<p>A For inoperative MALSR, increase S-28 BEMTE FIX minimums Cat A/B visibility to RVR 5000, Cat C/D visibility to 1 1/8 mile.</p> <p>33 -34°C Circling NA for Cats C and D north of Rwy 10-28. Night Landing: Rwy 21 NA. Helicopter visibility reduction below RVR 4000 NA.</p>	<p>MALSR</p>	<p>MISSED APPROACH: Climb to 1200 then climbing left turn to 3000 direct OME VOR/DME and hold, continue climb-in-hold to 3000.</p>



<p>1200</p> <p>3000</p> <p>OME</p>	<p>OME VOR/DME</p>				<p>Remain within 10 NM</p>
	<p>096°</p> <p>276°</p> <p>1900</p> <p>1700</p> <p>960</p> <p>3.16° TCH 49</p> <p>1.5 NM 1.3 NM 2.1 NM</p>				
CATEGORY	A	B	C	D	
S-28	960/40	938 (1000-3/4)	960-2	938 (1000-2)	
C CIRCLING	960-1 1/4	922 (1000-1 1/4)	960-2 3/4	922 (1000-2 3/4)	960-3
BEMTE FIX MINIMUMS					
S-28	540/40	518 (600-3/4)	540/55	518 (600-1)	
C CIRCLING	540-1	502 (600-1)	540-1 1/2	700-2	662 (700-2)

ELEV 38	D TDZE 22
---------	------------------

REIL Rwy 3 and 10 **1**

HIRL Rwy 10-28 **1**

MIRL Rwy 3-21 **1**

FAF to MAP 4.9 NM

Knots	60	90	120	150	180
Min:Sec	4:54	3:16	2:27	1:58	1:38

AK, 25 FEB 2021 to 22 APR 2021

AK, 25 FEB 2021 to 22 APR 2021