

WAAS CH 45927 W28A	APP CRS 279°	Rwy Idg 6009 TDZE 22 Apt Elev 38
---------------------------------	------------------------	---

RNAV (GPS) RWY 28

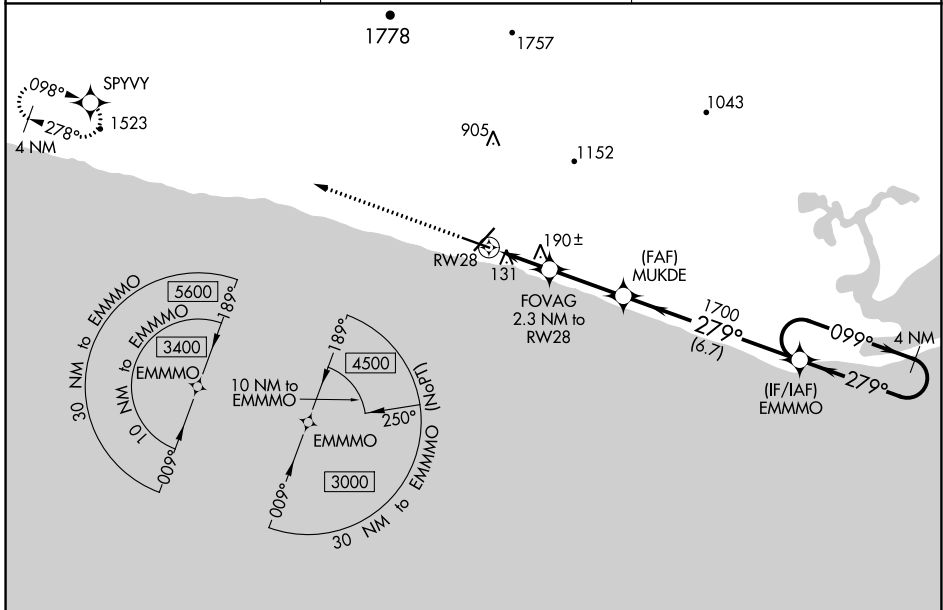
NOME (OME)(PAOM)

⚠ Inoperative table does not apply to LPV 28 all Cats. For uncompensated Baro-VNAV systems, LNAV/VNAV NA below -18°C (0°F) or above 54°C (130°F). Circling NA for Cats C and D north of Rwy 10-28. DME/DME RNP-0.3 NA. Helicopter visibility reduction below 4000 NA. Night landing: Rwy 21 NA.

MALS R
AS

MISSED APPROACH: Climb to 3700 direct SPYVY and hold, continue climb-in-hold to 3700.

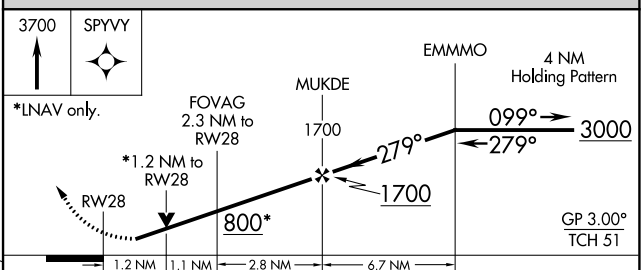
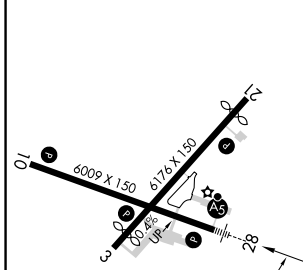
AFIS 119.925	ANCHORAGE CENTER 133.3 290.4	NOME RADIO 123.6 (CTAF) 📻
------------------------	--	--



AK, 25 FEB 2021 to 22 APR 2021

AK, 25 FEB 2021 to 22 APR 2021

ELEV 38	D	TDZE 22
---------	----------	---------



CATEGORY	A	B	C	D
LPV DA		272/40	250 (300-¾)	
LNAV/VNAV DA		298/40	276 (300-¾)	
LNAV MDA		440/40	418 (500-¾)	
C CIRCLING	540-1	502 (600-1)	540-1½ 502 (600-1½)	700-2 662 (700-2)

REIL Rwy 3 and 10 **📻**
HIRL Rwy 10-28 **📻**
MIRL Rwy 3-21 **📻**