

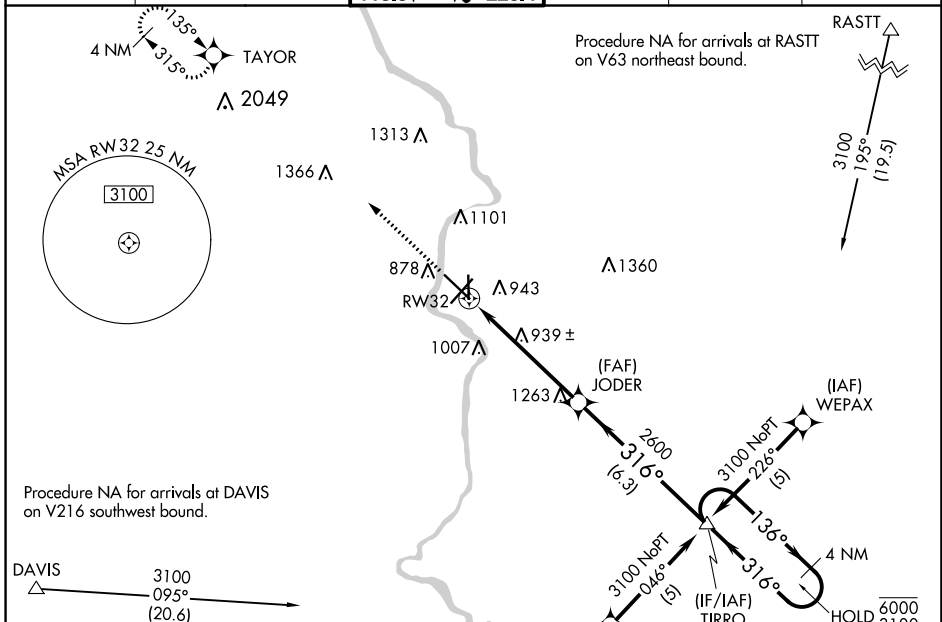
APP CRS	Rwy Idg	7302
316°	TDZE	806
	Apt Elev	808

RNAV (GPS) RWY 32

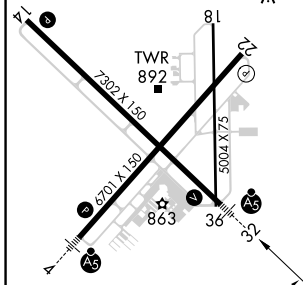
SOUTHERN WISCONSIN RGNL (JVL)

RNP APCH.		<p>⚠ NA Circling Rwy 18 NA at night. Baro-VNAV and VDP NA when using Rockford altimeter setting. For uncompensated Baro-VNAV systems, procedure NA below -16°C or above 54°C. When local altimeter setting not received use Rockford altimeter setting and increase all DA/MDAs 80 feet. For inop ALS, increase LNAV Cat A/B visibility to 1 SM, and Cat C/D to 1½ SM.</p>		<p>MALSR</p>	<p>MISSED APPROACH: Climb to 3100 direct TAYOR and hold.</p>
-----------	--	---	--	--------------	--

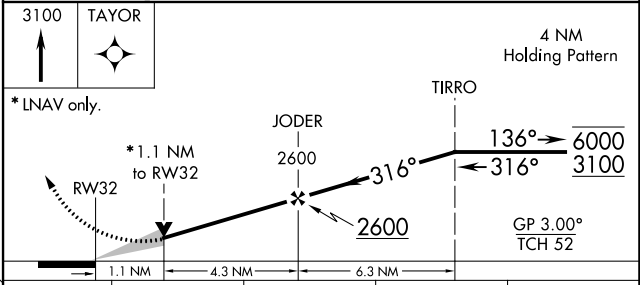
ATIS	ROCKFORD APP CON	JANESVILLE TOWER ★	GND CON	CLNC DEL	UNICOM
128.25	121.0 327.0	118.8(CTAF) 0 225.4	121.65	121.65	122.95



ELEV 808	D	TDZE 806
----------	----------	----------



REIL Rws 14 and 22
 MIRL Rwy 18-36
 HIRL Rws 4-22 and 14-32



CATEGORY	A	B	C	D
LNAV/VNAV	DA	1220-1	414 (500-1)	
LNAV MDA		1200-¾	394 (400-¾)	1200-1 394 (400-1)
CIRCLING	1260-1	452 (500-1)	1280-1½ 472 (500-1½)	1420-2 612 (700-2)

EC-3, 25 MAR 2021 to 22 APR 2021

EC-3, 25 MAR 2021 to 22 APR 2021